

Custom folded 1.2mm aluminium flashing powder coated to match cladding and chased in to 15x6mm saw cut and sealed with flexible joint sealant (By others)

BF001

Alibat fixed to concrete masonry @ 600 centers max

NC247T + NC248

Termination flashing base and cap.

NC 204

10g x 16mm csk Tek screw @ 600 centers through anti-crush packer (by others)

15mm profiled closed cell foam insert end caps to suit profile of cladding

NC226

Impervious barrier (MDPE or similar) between batten & cladding

NC204

10g ss csk screws in to Alibat @ 600 centers

NC203A

fixing clip @ 600 centers

Concrete masonry fasteners

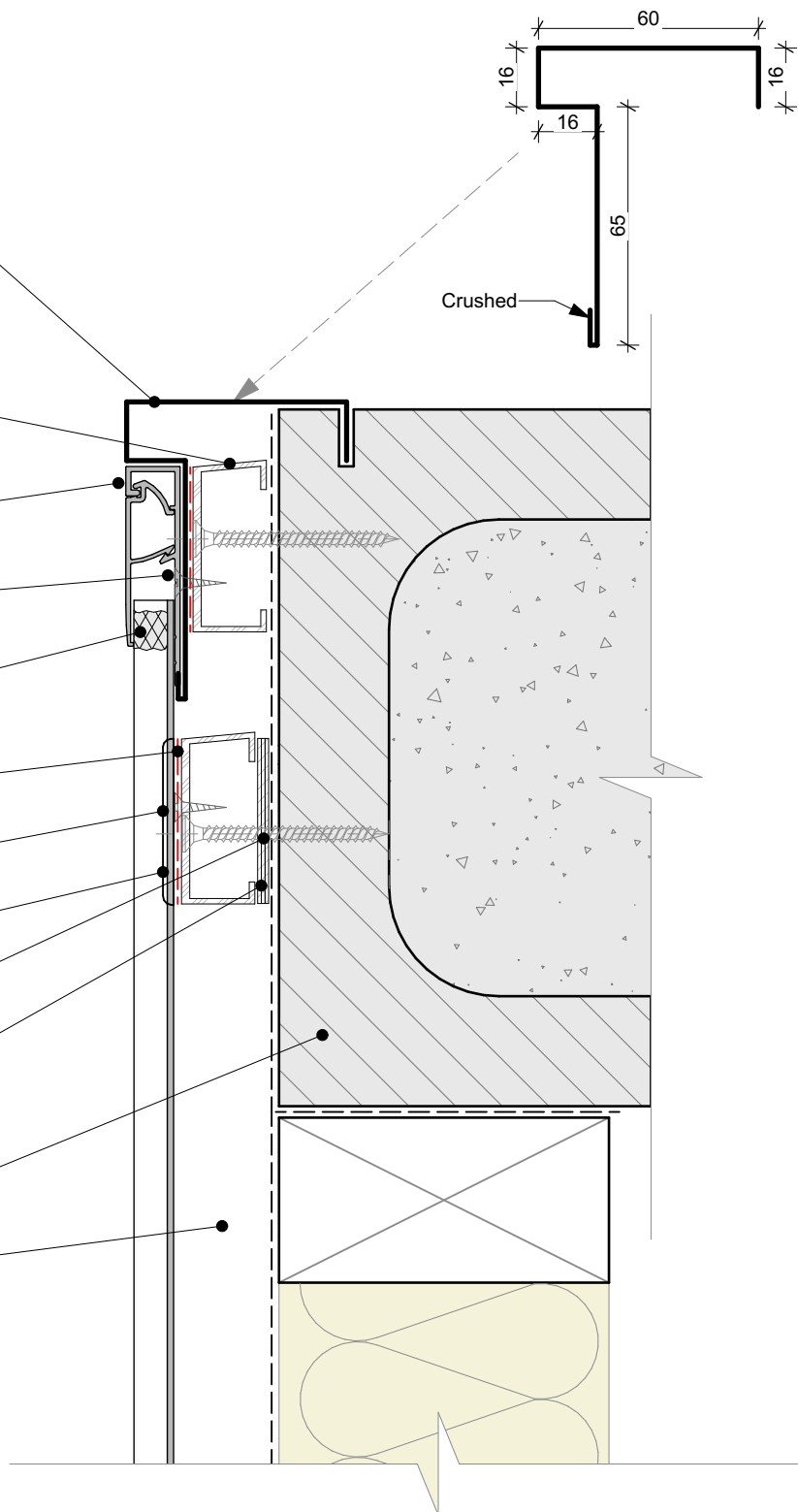
BF SPACER

1mm shims used, if required to level/plumb wall

Concrete masonry block wall

Drained and vented cavity as per E2/AS1

Crushed



General note:

- Cladding fixings omitted for clarity
- When finishing a wall with a ripped board, the board must be direct fixed with a counter sunk screw @ 600mm centres

Cavity batten note:

- 20mm single castellated timber battens required for all Nu-Wall installations.
- Batten to have 15° slope for moisture egress
- Allow 6mm gap between vertical and horizontal battens
- Sill and head battens to be max. 500mm with a 6mm gap to each segment
- 18mm single castellated battens are available from Nu Wall for all vertical applications to wall junctions and jambs
- Proprietary Nu-Wall Alibat is available as an alternative when a structural non-combustable cavity batten is required



nu-wall
CLADDING

Nu-Wall cladding horizontal on cavity

Typical Nu-Wall to concrete masonry external corner

© 2021 copyright in this document is the property of Nu-Wall Aluminium Cladding Limited. All rights reserved. Nu-Wall is a registered trademark of Aluminium Product Brands NZ Limited

NW-HOC-037.03

Drawn by: Nu-Wall

Date: 02/07/2025

Checked by: RL, GT

Scale: 1:2 @ A4