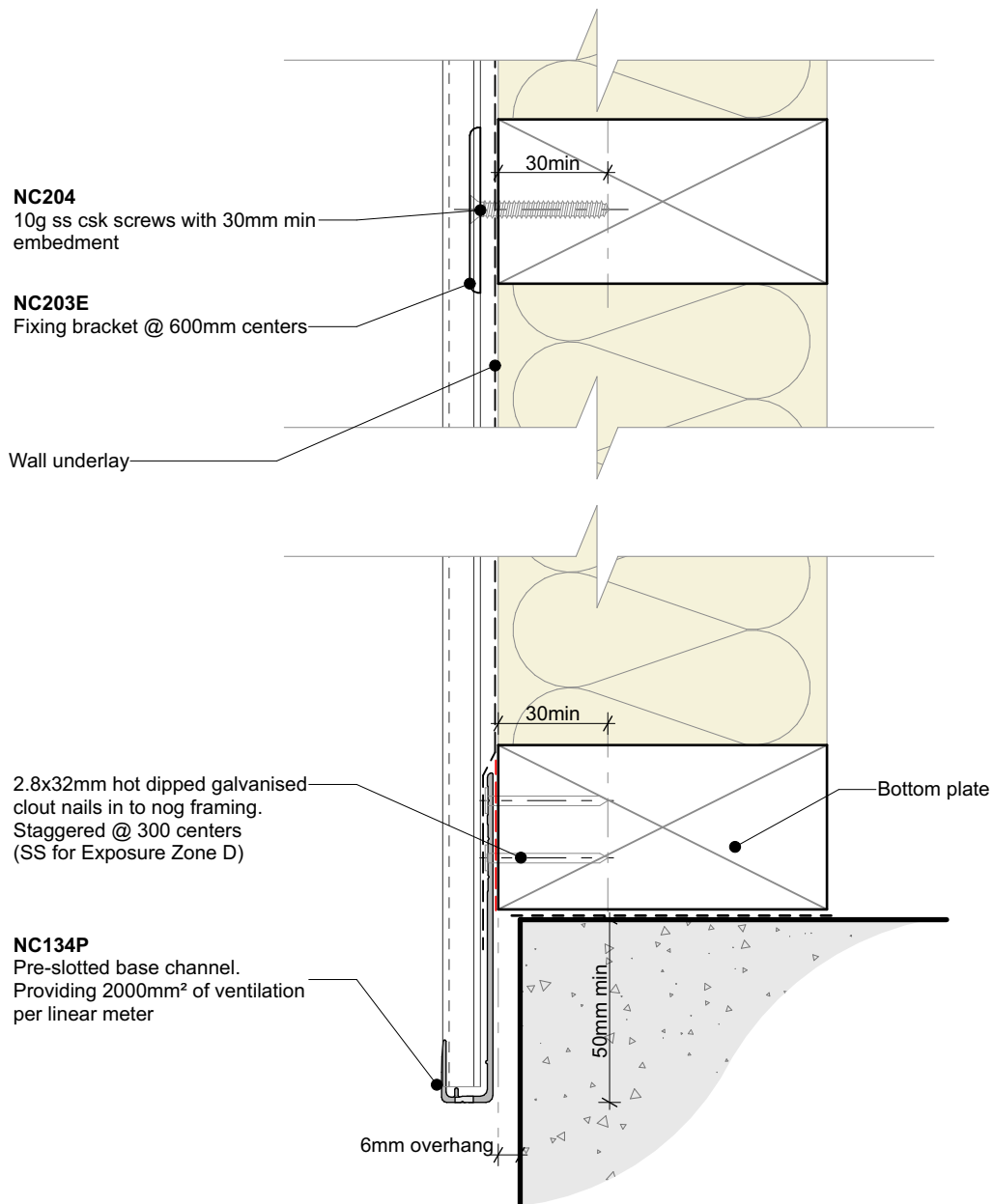




Nu-Wall Extruded Aluminium Cladding  
Installation specifications - Vertical orientation direct fix

- 1 NW-VDF-001 Typical installation - Timber frame
- 2 NW-VDF-002 Typical base channel fixing
- 3 NW-VDF-003 Typical base channel over timber floor
- 4 NW-VDF-004 Typical base channel over waterproof deck
- 5 NW-VDF-004b Typical base channel over concrete slab
- 6 NW-VDF-005 Pre-Fabricated 90 deg base channel corner
- 7 NW-VDF-006 Typical corner NC107X and NC109X assembly
- 8 NW-VDF-007 Typical external 90 deg corner
- 9 NW-VDF-008 Internal 90 deg corner using NC107X and NC109X
- 10 NW-VDF-009 Typical inter storey or horizontal joint
- 11 NW-VDF-010 Typical sill section - NC247 and NC248 assembly
- 12 NW-VDF-011 Typical jamb section - NC247 and NC248 assembly
- 13 NW-VDF-012 Typical jamb section with negative detail filler
- 14 NW-VDF-013 Typical head section
- 15 NW-VDF-014 Soaker installation to window jamb
- 16 NW-VDF-015 Typical head flashing end detail
- 17 NW-VDF-016a Typical soffit trim
- 18 NW-VDF-016b Typical raking soffit
- 19 NW-VDF-016c Typical inverse raking soffit
- 20 NW-VDF-017 Typical pipe penetration
- 21 NW-VDF-018 Typical apron, roof to wall junction
- 22 NW-VDF-019 Typical parapet to wall
- 23 NW-VDF-020 Typical deck to wall junction
- 24 NW-VDF-021 Typical roof and gutter to wall junction
- 25 NW-VDF-022 Notching board around window jamb
- 26 NW-VDF-023 Ripped board to end of wall junction
- 27 NW-VDF-024 Typical Nu-Wall fascia to soffit
- 28 NW-VDF-025 Typical Nu-Wall to fascia - soffit - wall (with alternative)
- 29 NW-VDF-026 Typical garage door head - jamb (Timber reveal)
- 30 NW-VDF-026b Typical garage door head - jamb (Nu-Wall Reveal Profile)
- 31 NW-VDF-027 Typical Nu-Wall to brick internal corner
- 32 NW-VDF-028 Typical Nu-Wall to brick external corner NC138 and NC139
- 33 NW-VDF-029 Typical Nu-Wall to brick horizontal junction
- 34 NW-VDF-030 Typical Nu-Wall to brick vertical junction
- 35 NW-VDF-031 Typical Nu-Wall to concrete masonry vertical junction
- 36 NW-VDF-032 Typical Nu-Wall to concrete masonry external corner
- 37 NW-VDF-033 Typical Nu-Wall to concrete masonry internal corner



**Note:**  
 • Standard fixing specification. May vary depending on wind load

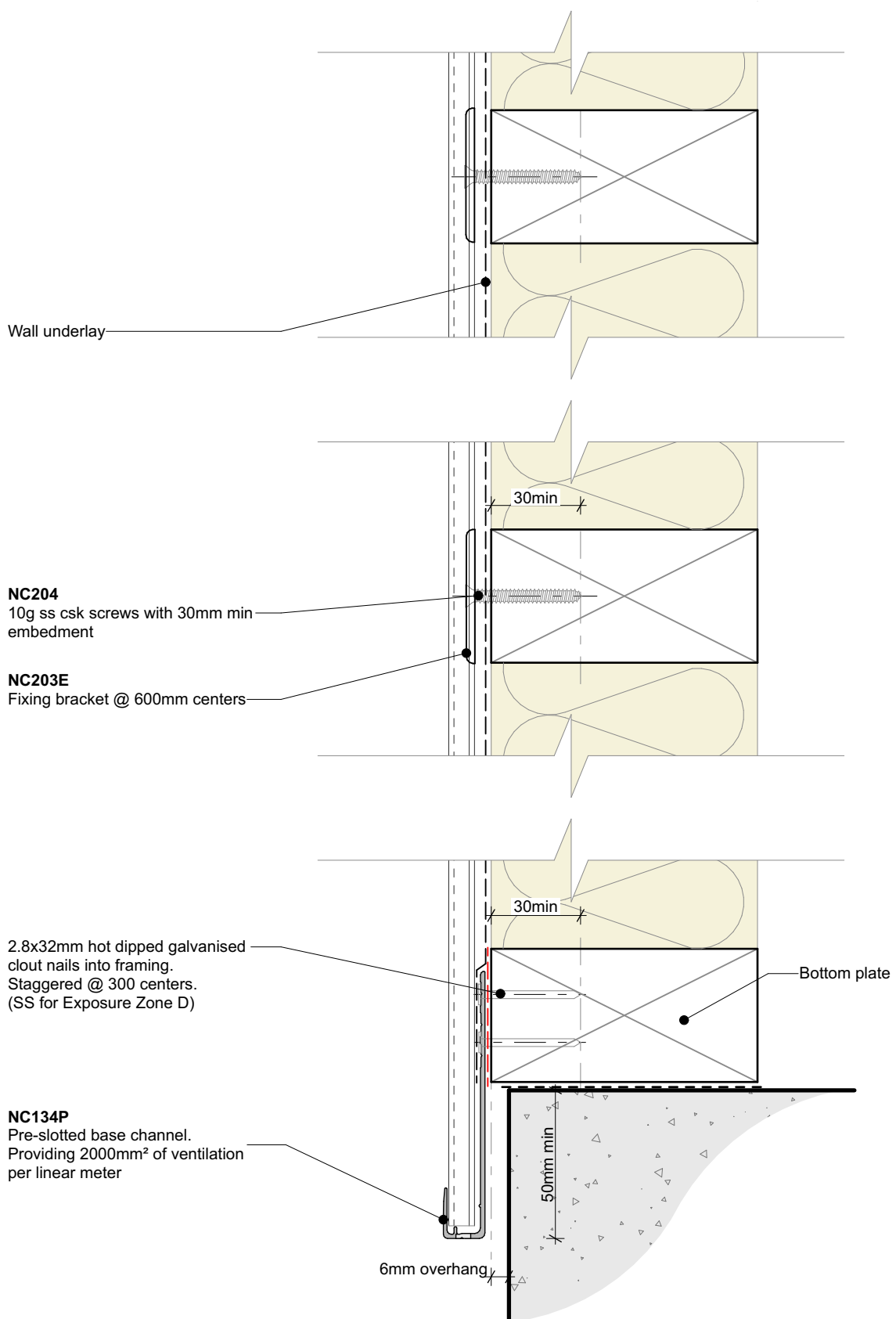


Nu-Wall cladding vertical direct fix  
 Typical installation - Timber frame

NW-VDF-001.02

Drawn by: Nu-Wall	Date: 28/7/22
Checked by: RL, GT	Scale: 1:2 @ A4

© 2021 copyright in this document is the property of Nu-Wall Aluminium Cladding Limited. All rights reserved. Nu-Wall is a registered trademark of Aluminium Product Brands NZ Limited



**Note:**  
• Standard fixing specification. May vary depending on wind load

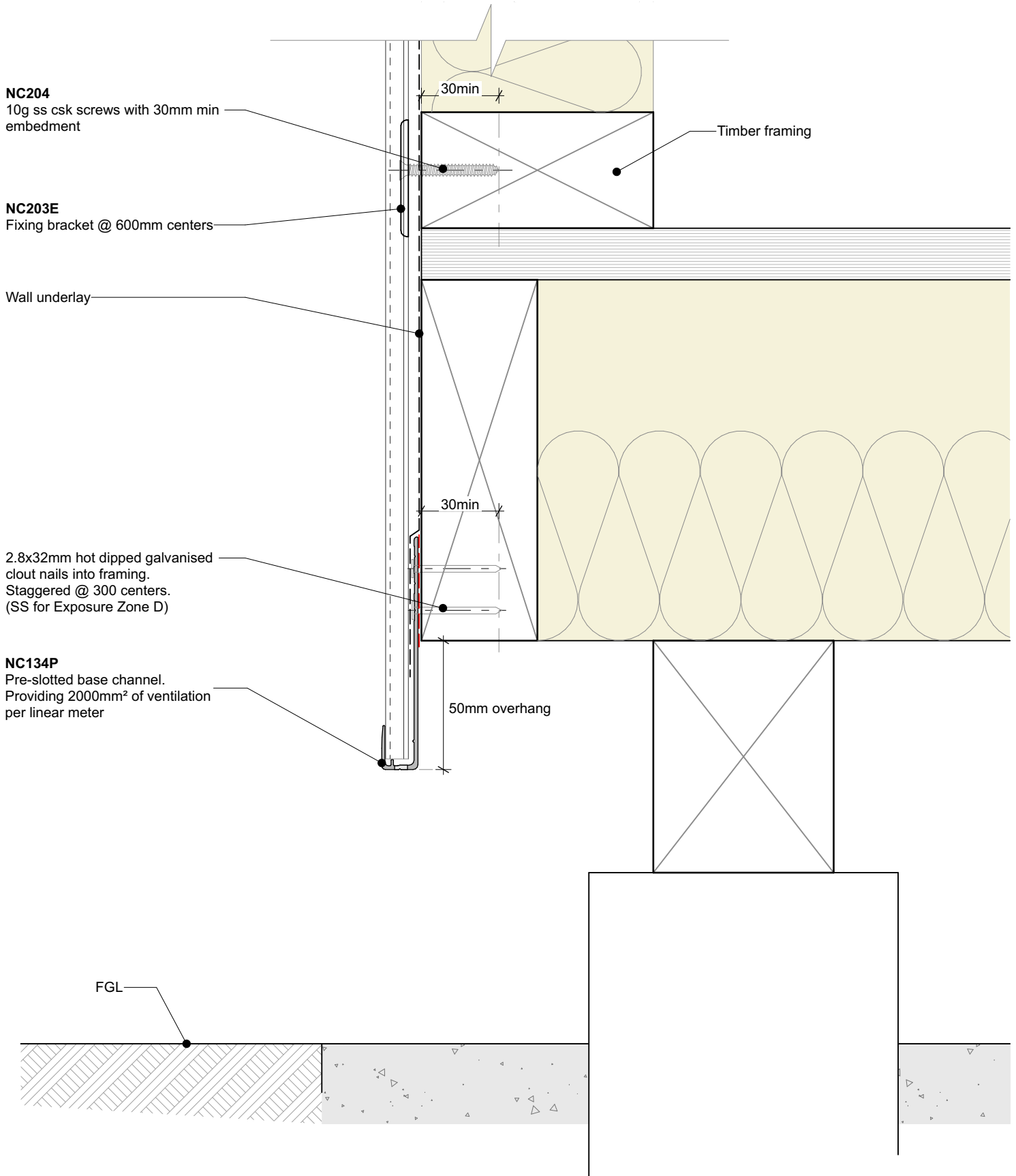


Nu-Wall cladding vertical direct fix  
Typical base channel fixing

NW-VDF-002.02

Drawn by: Nu-Wall	Date: 28/7/22
Checked by: RL, GT	Scale: 1:2 @ A4

© 2021 copyright in this document is the property of Nu-Wall Aluminium Cladding Limited. All rights reserved. Nu-Wall is a registered trademark of Aluminium Product Brands NZ Limited



**Note:**  
 • Standard fixing specification. May vary depending on wind load



Nu-Wall cladding vertical direct fix  
 Typical base channel over timber floor

NW-VDF-003.02

Drawn by: Nu-Wall	Date: 28/7/22
Checked by: RL, GT	Scale: 1:2 @ A4

© 2021 copyright in this document is the property of Nu-Wall Aluminium Cladding Limited. All rights reserved. Nu-Wall is a registered trademark of Aluminium Product Brands NZ Limited

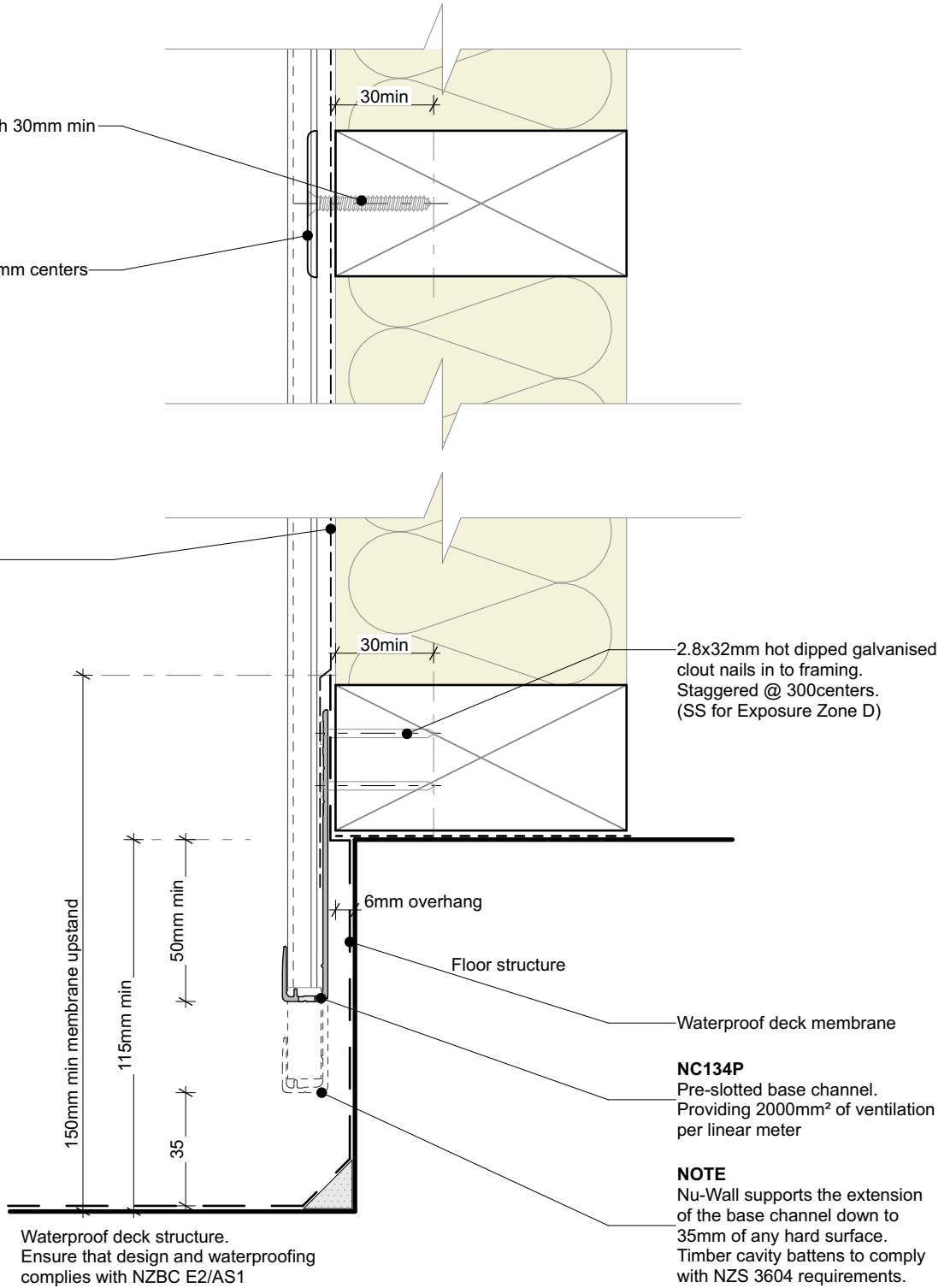
**NC204**

10g ss csk screws with 30mm min embedment

**NC203E**

Fixing bracket @ 600mm centers

Wall underlay



**Note:**

- Standard fixing specification. May vary depending on wind load

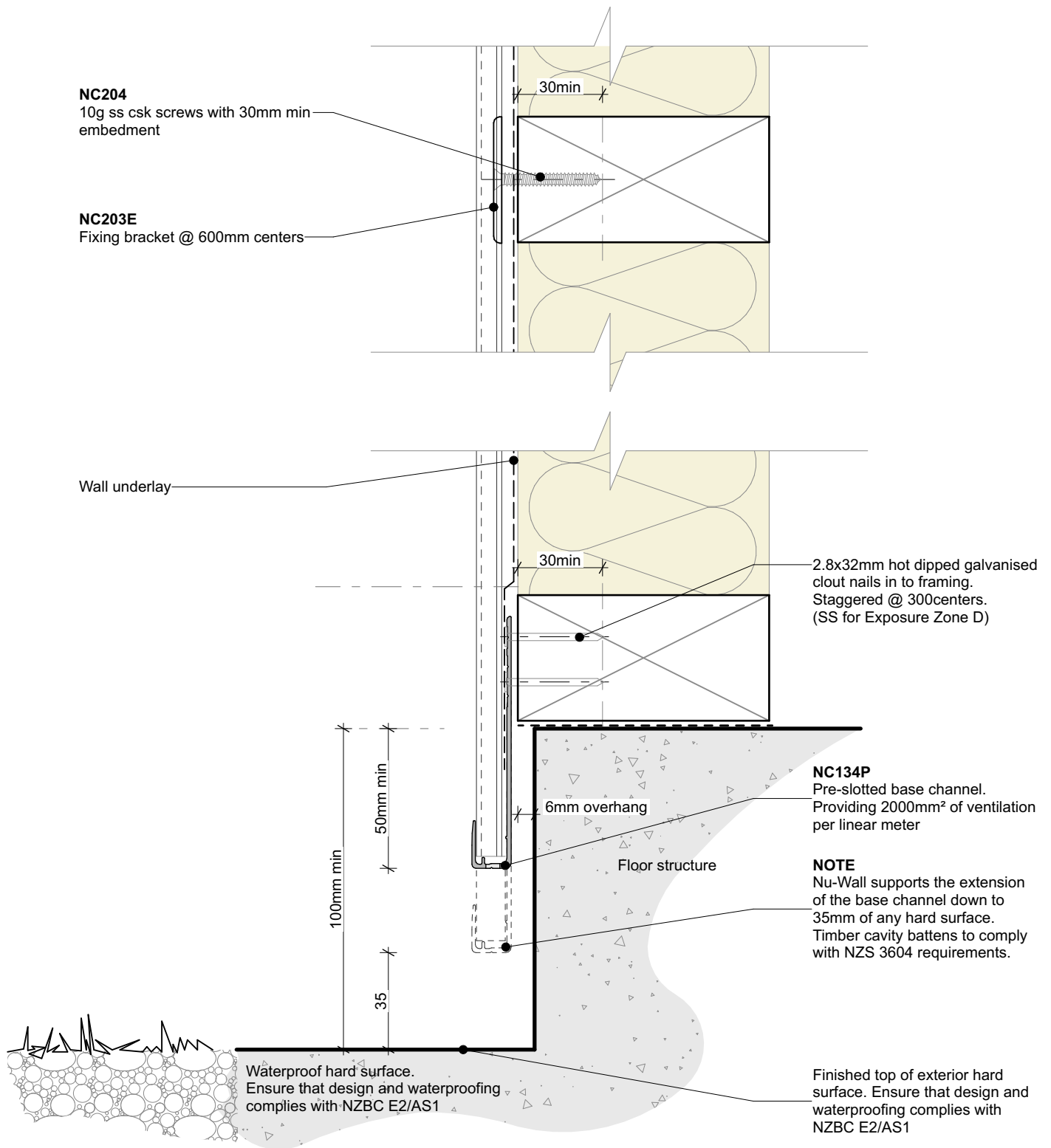


Nu-Wall cladding vertical direct fix  
 Typical base channel over waterproof deck

NW-VDF-004.02

Drawn by: Nu-Wall	Date: 28/7/22
Checked by: RL, GT	Scale: 1:2 @ A4

© 2021 copyright in this document is the property of Nu-Wall Aluminium Cladding Limited. All rights reserved. Nu-Wall is a registered trademark of Aluminium Product Brands NZ Limited



**Note:**  
• Standard fixing specification. May vary depending on wind load



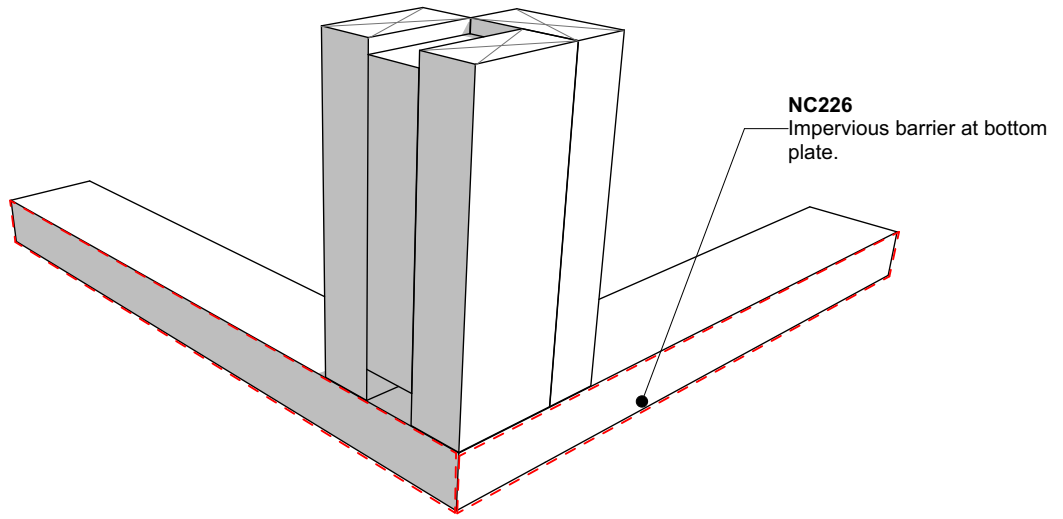
Nu-Wall cladding vertical direct fix  
Typical base channel over concrete slab

NW-VDF-004b.02

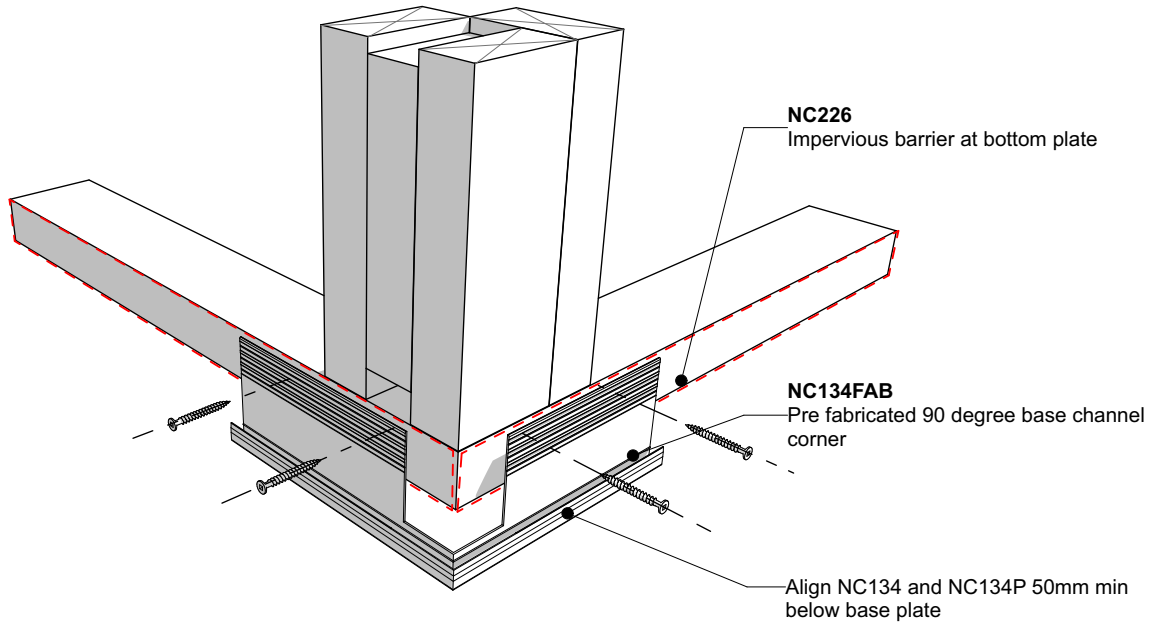
Drawn by: Nu-Wall	Date: 28/7/22
Checked by: RL, GT	Scale: 1:2 @ A4

© 2021 copyright in this document is the property of Nu-Wall Aluminium Cladding Limited. All rights reserved. Nu-Wall is a registered trademark of Aluminium Product Brands NZ Limited

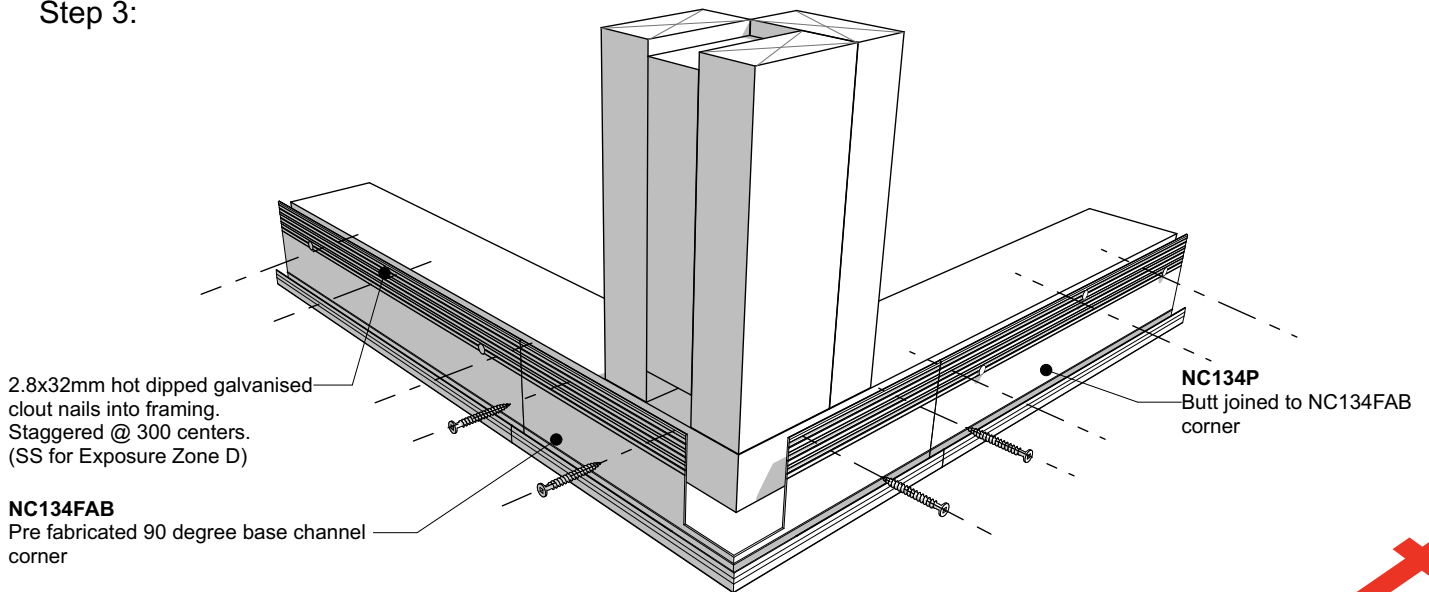
Step 1:



Step 2:



Step 3:



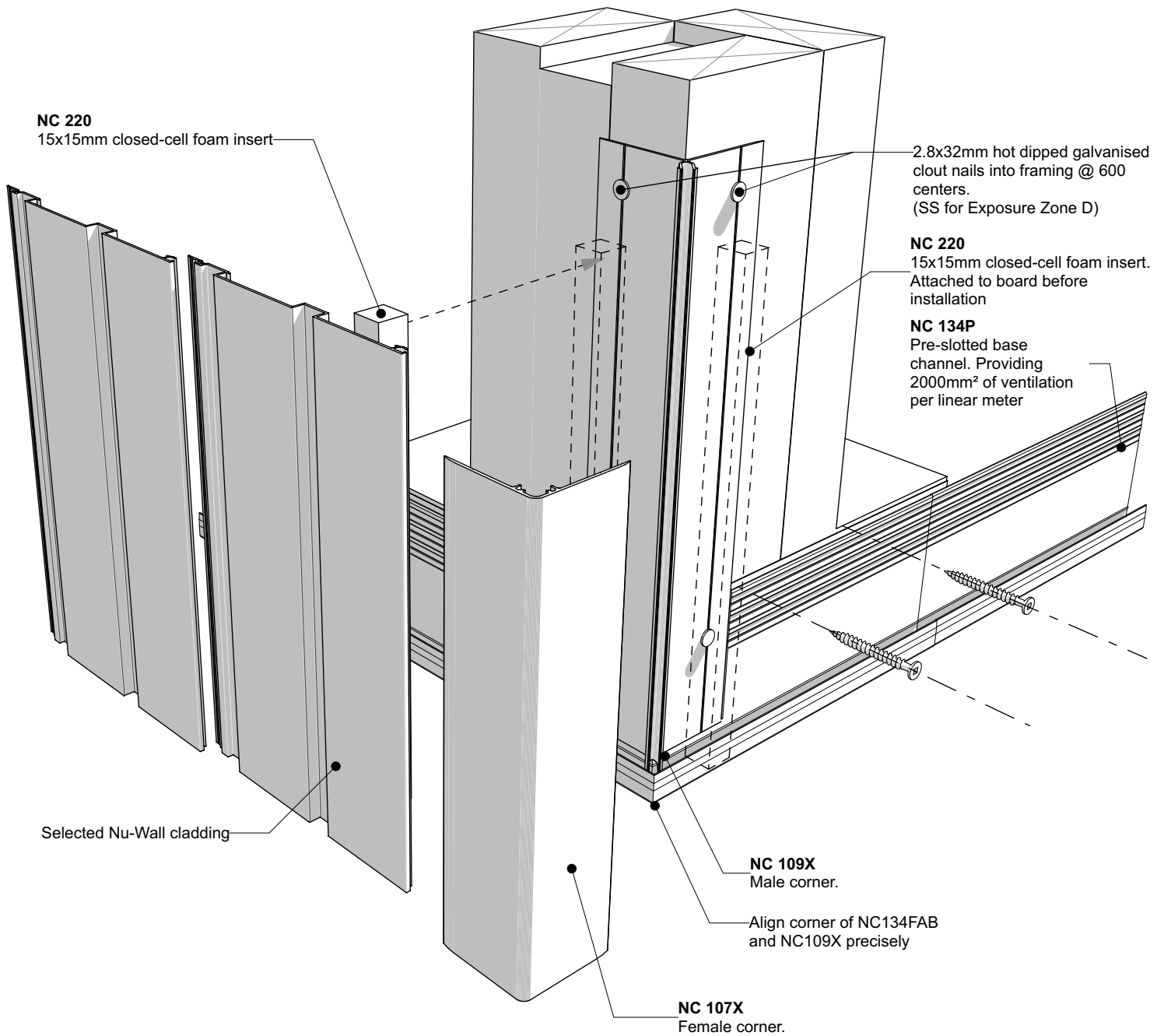
Nu-Wall cladding vertical direct fix  
Pre-Fabricated 90 deg base channel corner

NW-VDF-005.02

Drawn by: Nu-Wall Date: 28/7/22

Checked by: RL, GT Scale: NTS

© 2021 copyright in this document is the property of Nu-Wall Aluminium Cladding Limited. All rights reserved. Nu-Wall is a registered trademark of Aluminium Product Brands NZ Limited



Nu-Wall cladding vertical direct fix  
Typical corner NC107X and NC109X assembly

NW-VDF-006.02

© 2021 copyright in this document is the property of Nu-Wall Aluminium Cladding Limited. All rights reserved. Nu-Wall is a registered trademark of Aluminium Product Brands NZ Limited

Drawn by: Nu-Wall	Date: 28/7/22
Checked by: RL, GT	Scale: NTS



2.8x32mm hot dipped galvanised clout nails @ 600 centers.  
(SS for Exposure Zone D)

**NC203E**  
fixing clip @ 600 centers

Last board ripped to fit

**NC 204**  
10g x 16mm csk Tek screw @ 600 centers through anti-crush buttons.

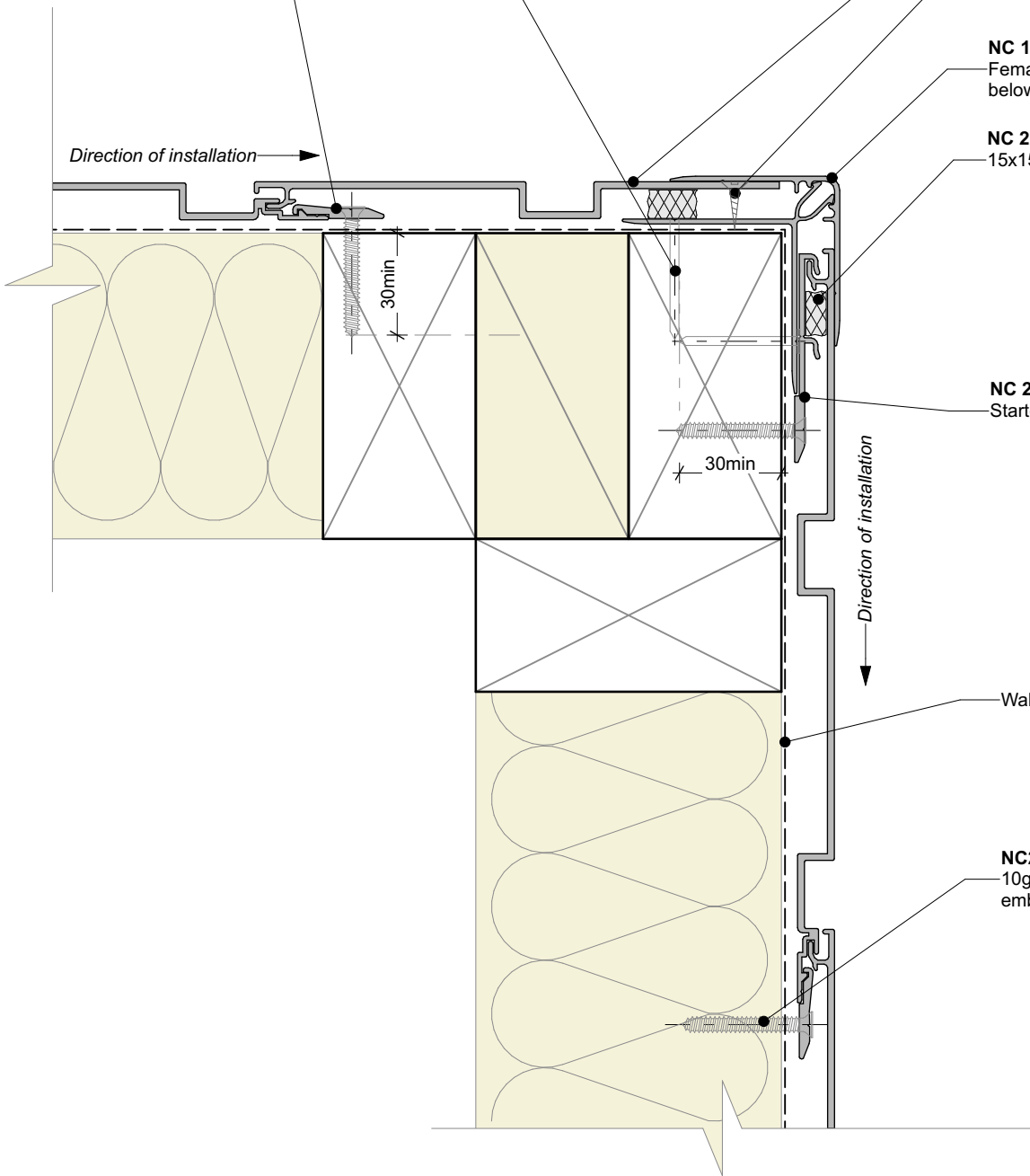
**NC 107X / NC 109X**  
Female/Male corner. Extends 50mm below bottom plate

**NC 220**  
15x15mm closed-cell foam insert

**NC 232 F**  
Starter bracket

Wall underlay

**NC204**  
10g ss csk screws with 30mm min embedment



**BRANZ Appraised**  
Appraisal No. 556 [2019]



Nu-Wall cladding vertical direct fix  
Typical external 90 deg corner

NW-VDF-007.02

Drawn by: Nu-Wall

Date: 28/7/22

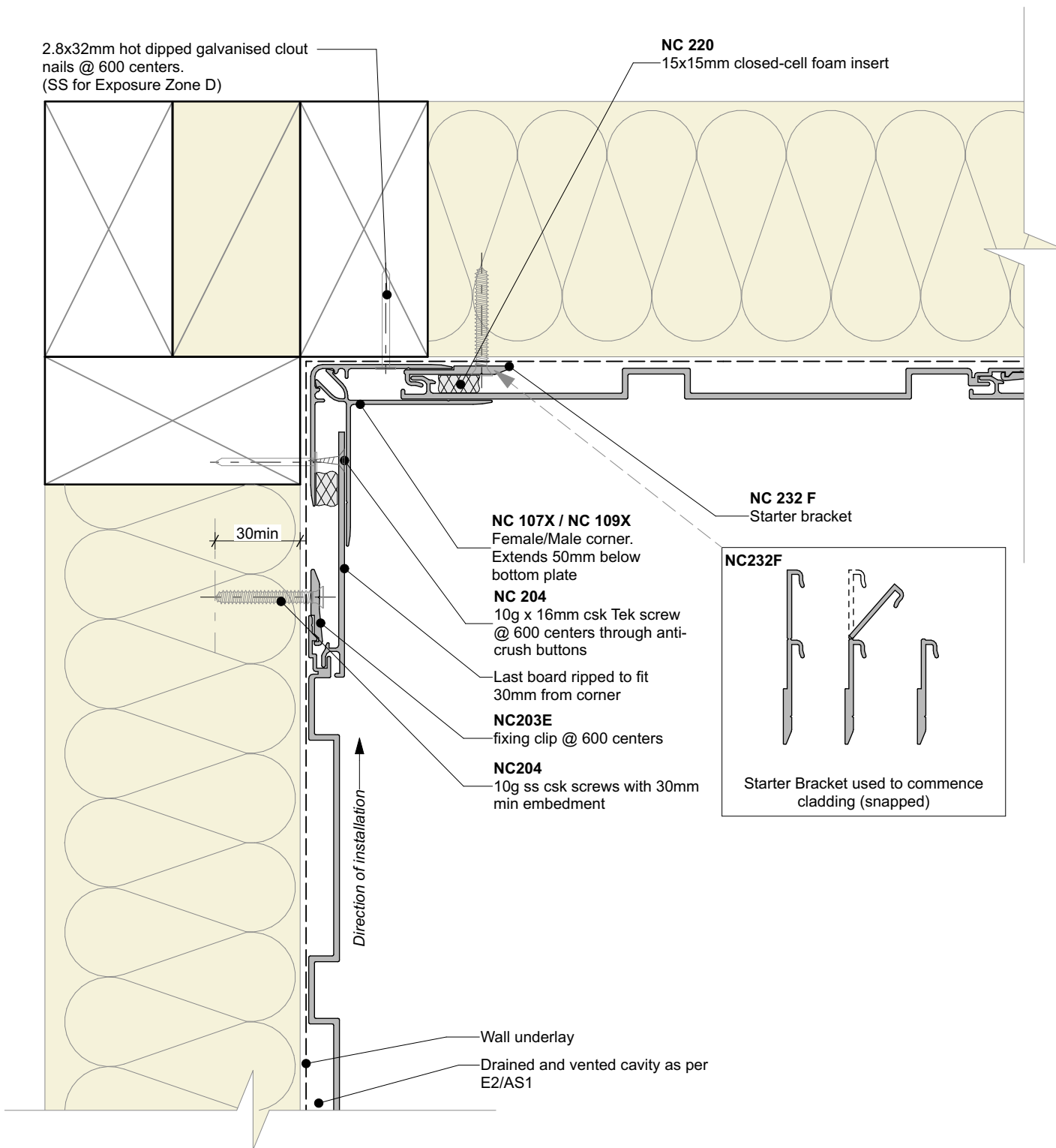
© 2021 copyright in this document is the property of Nu-Wall Aluminium Cladding Limited. All rights reserved. Nu-Wall is a registered trademark of Aluminium Product Brands NZ Limited

Checked by: RL, GT

Scale: 1:2 @ A4

2.8x32mm hot dipped galvanised clout nails @ 600 centers. (SS for Exposure Zone D)

**NC 220**  
15x15mm closed-cell foam insert



**NC 232 F**  
Starter bracket

**NC 107X / NC 109X**  
Female/Male corner.  
Extends 50mm below  
bottom plate

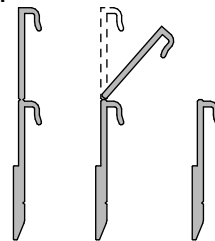
**NC 204**  
10g x 16mm csk Tek screw  
@ 600 centers through anti-  
crush buttons

Last board ripped to fit  
30mm from corner

**NC203E**  
fixing clip @ 600 centers

**NC204**  
10g ss csk screws with 30mm  
min embedment

**NC232F**



Starter Bracket used to commence  
cladding (snapped)

Wall underlay

Drained and vented cavity as per  
E2/AS1

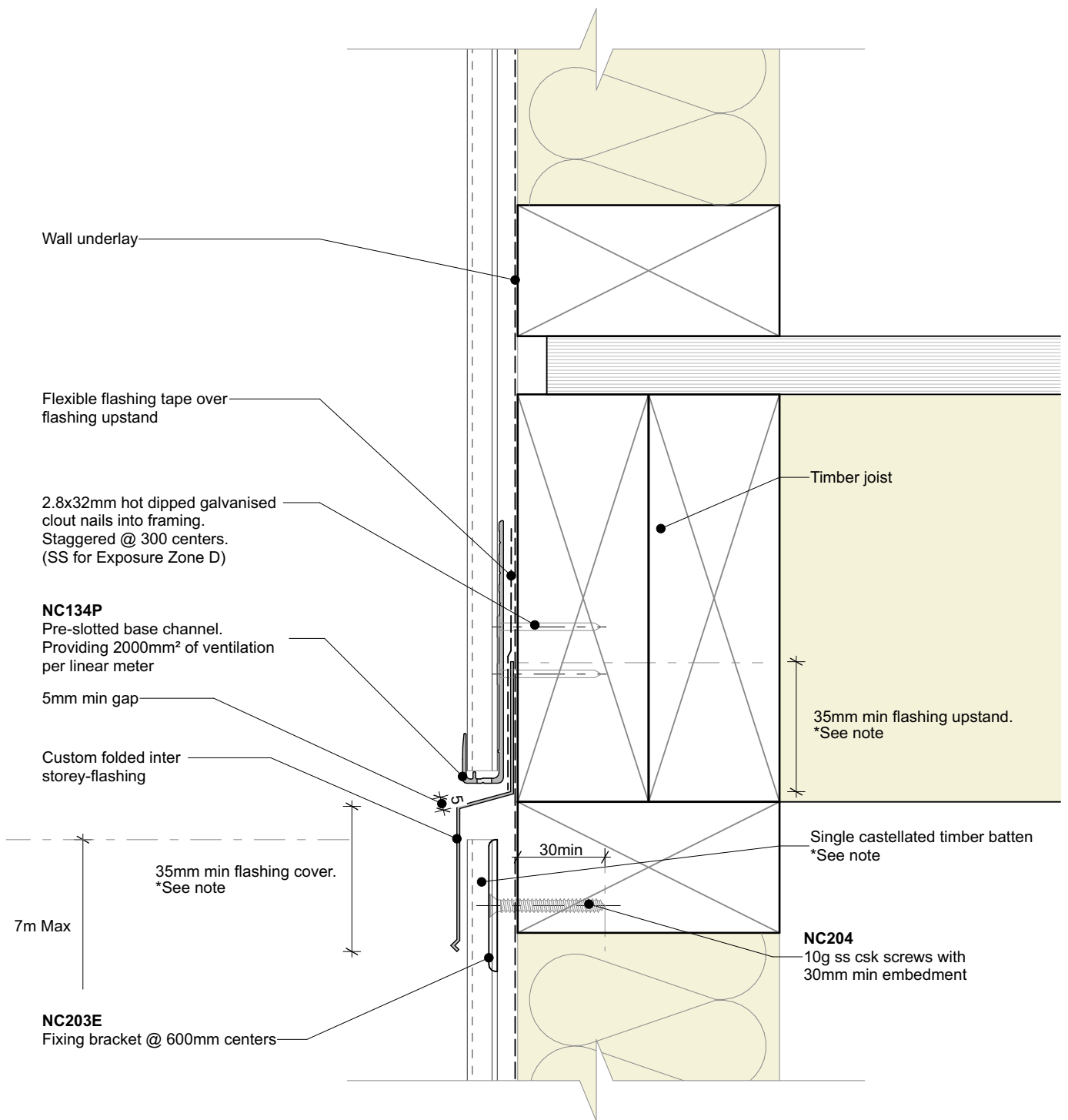


Nu-Wall cladding vertical direct fix  
Internal 90 deg corner using NC107X and NC109X

NW-VDF-008.02

© 2021 copyright in this document is the property of Nu-Wall Aluminium Cladding Limited. All rights reserved. Nu-Wall is a registered trademark of Aluminium Product Brands NZ Limited

Drawn by: Nu-Wall	Date: 28/7/22
Checked by: RL, GT	Scale: 1:2 @ A4



**General note:**

- This detail is to be used to limit continuous cavities to the lesser of two storeys or 7meters. Refer E2/AS1 Table 7 for flashing cover requirements

**Inter storey flashing note:**

- Nu-Wall offers pre-fabricated internal, external and stop-end sections. Contact Nu-Wall for assistance

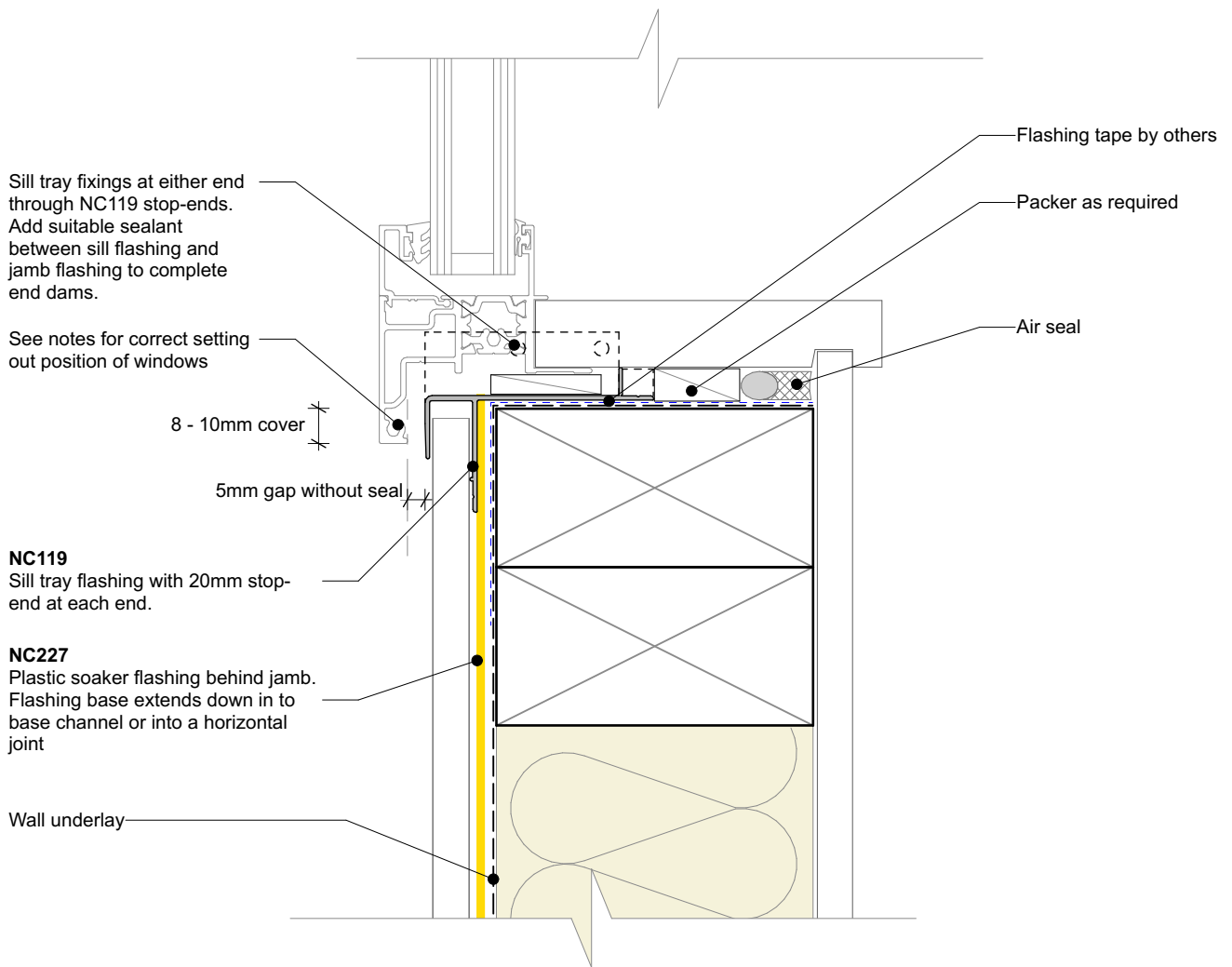


Nu-Wall cladding vertical direct fix  
Typical inter storey or horizontal joint

NW-VDF-009.02

Drawn by: Nu-Wall	Date: 28/7/22
Checked by: RL, GT	Scale: 1:2 @ A4

© 2021 copyright in this document is the property of Nu-Wall Aluminium Cladding Limited. All rights reserved. Nu-Wall is a registered trademark of Aluminium Product Brands NZ Limited



**General note:**

- Cladding fixings omitted for clarity

**Window setting out notes: (from face of air barrier)**

- 24mm from wall underlay to window fin

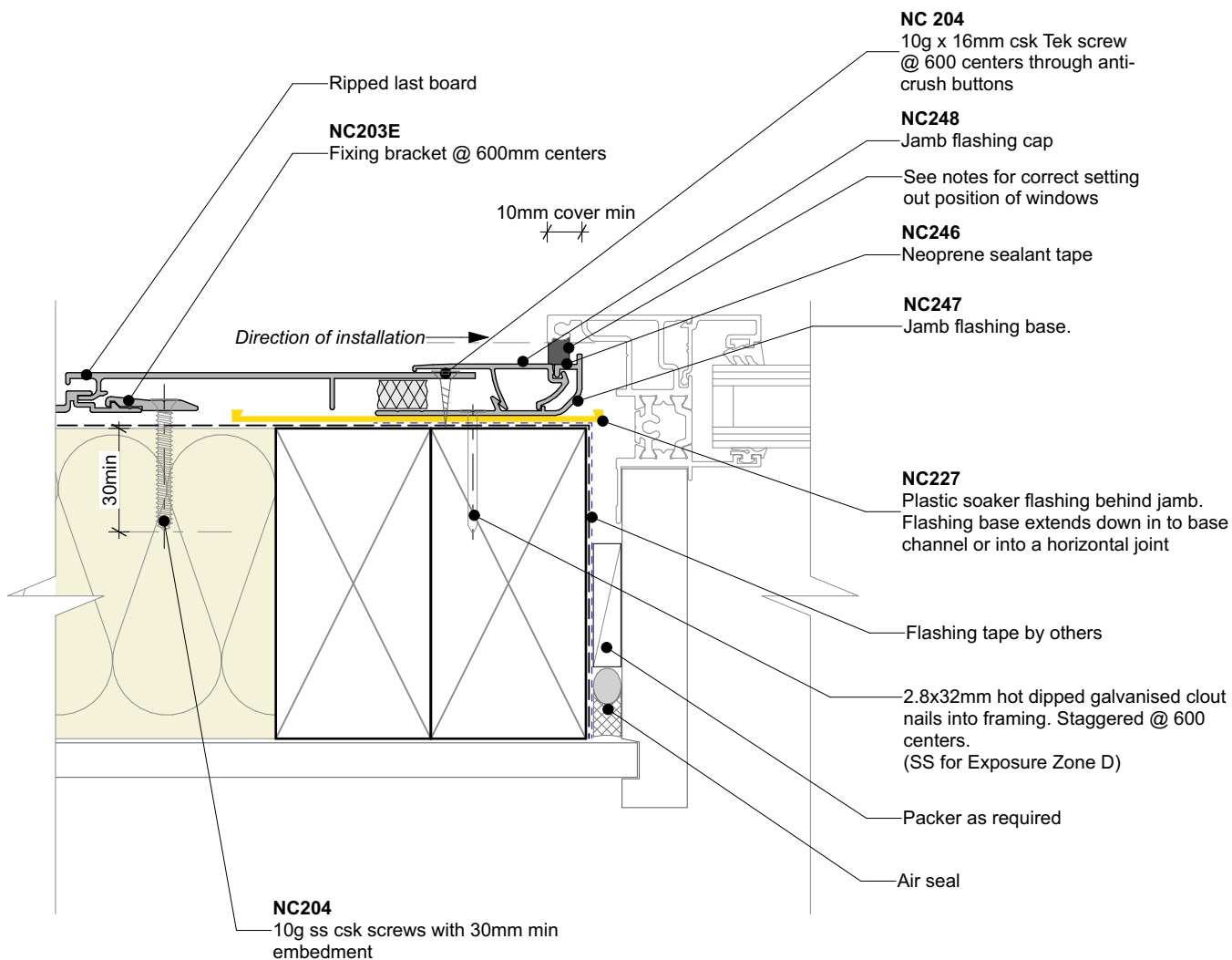


Nu-Wall cladding vertical direct fix  
Typical sill section - NC247 and NC248 assembly

NW-VDF-010.02

Drawn by: Nu-Wall	Date: 28/7/22
Checked by: RL, GT	Scale: 1:2 @ A4

© 2021 copyright in this document is the property of Nu-Wall Aluminium Cladding Limited. All rights reserved. Nu-Wall is a registered trademark of Aluminium Product Brands NZ Limited



**General note:**

- Cladding fixings omitted for clarity

**Window setting out notes: (from face of air barrier)**

- 24mm from underlay to window fin

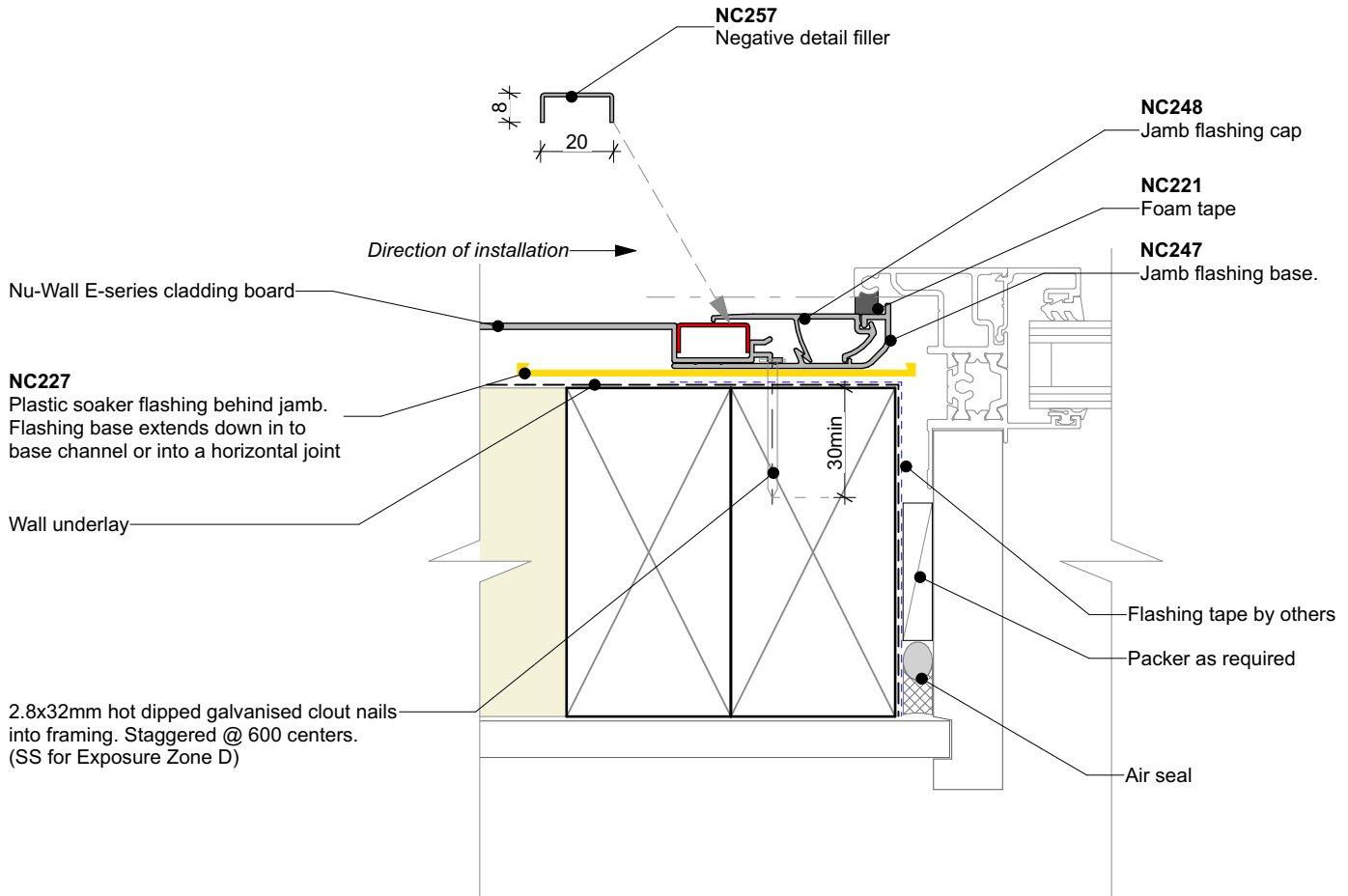


Nu-Wall cladding vertical direct fix  
Typical jamb section - NC247 and NC248 assembly

NW-VDF-011.02

Drawn by: Nu-Wall	Date: 28/7/22
Checked by: RL, GT	Scale: 1:2 @ A4

© 2021 copyright in this document is the property of Nu-Wall Aluminium Cladding Limited. All rights reserved. Nu-Wall is a registered trademark of Aluminium Product Brands NZ Limited



**General note:**

- Cladding fixings omitted for clarity

**Window setting out notes: (from face of air barrier)**

- 24mm from underlay to window fin

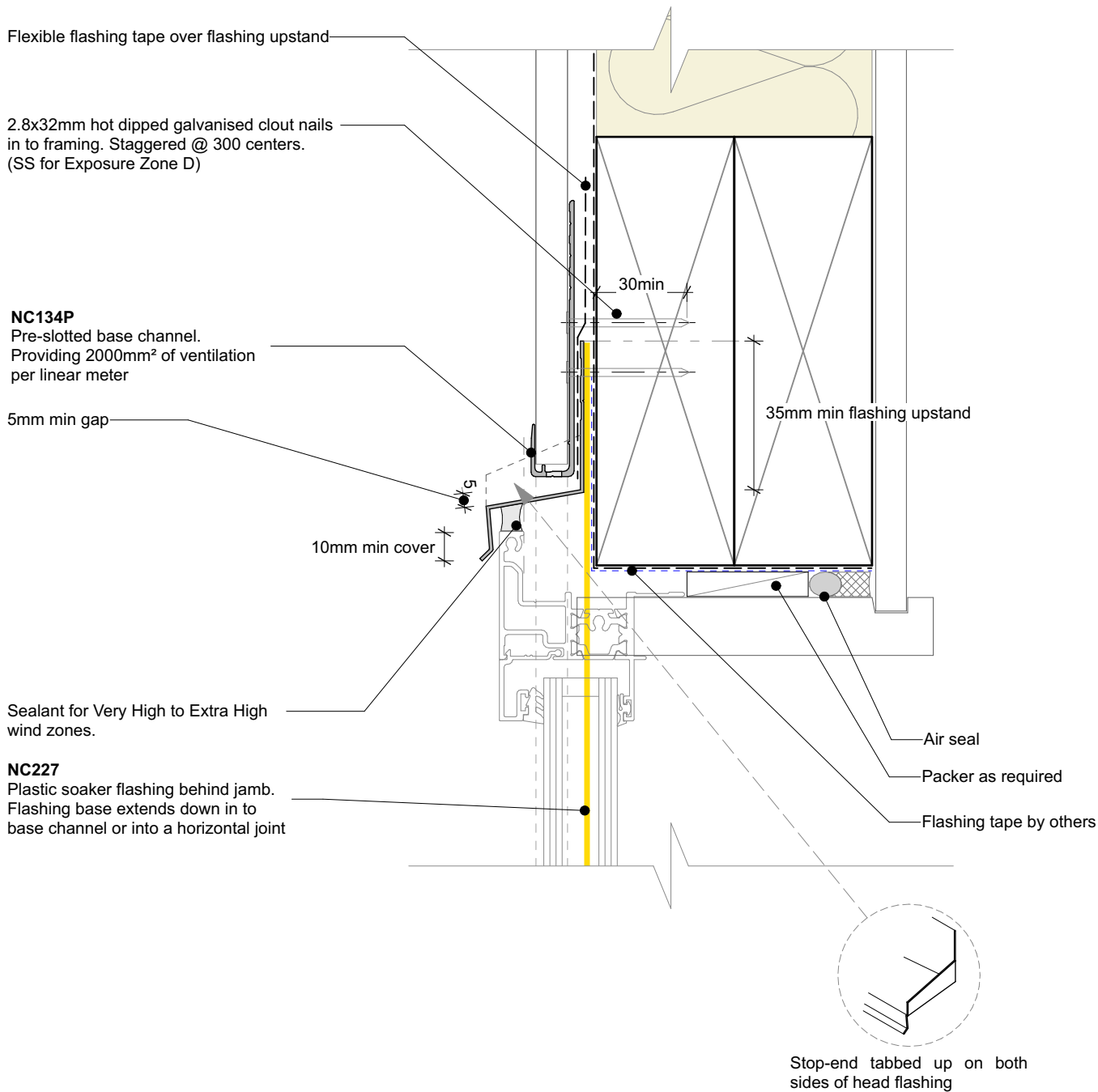


Nu-Wall cladding vertical direct fix  
Typical jamb section with negative detail filler

NW-VDF-012.02

Drawn by: Nu-Wall	Date: 28/7/22
Checked by: RL, GT	Scale: 1:2 @ A4

© 2021 copyright in this document is the property of Nu-Wall Aluminium Cladding Limited. All rights reserved. Nu-Wall is a registered trademark of Aluminium Product Brands NZ Limited



**General note:**

- Cladding fixings omitted for clarity

**Window setting out notes: (from face of air barrier)**

- 24mm from underlay to window fin

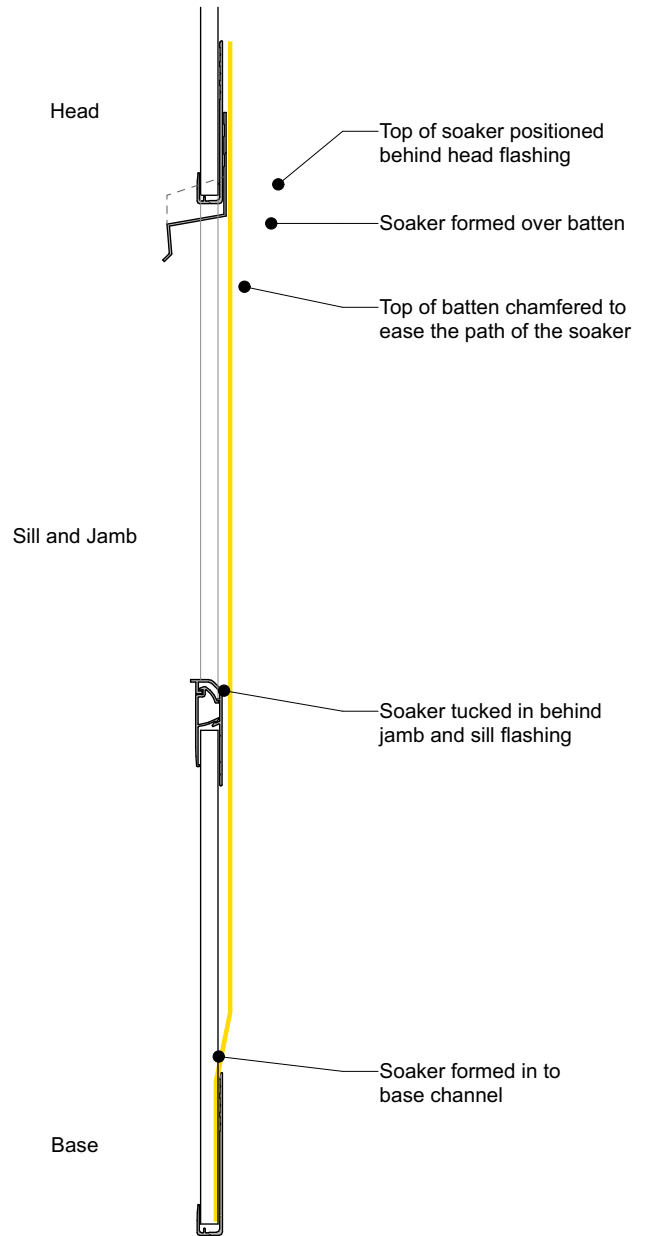
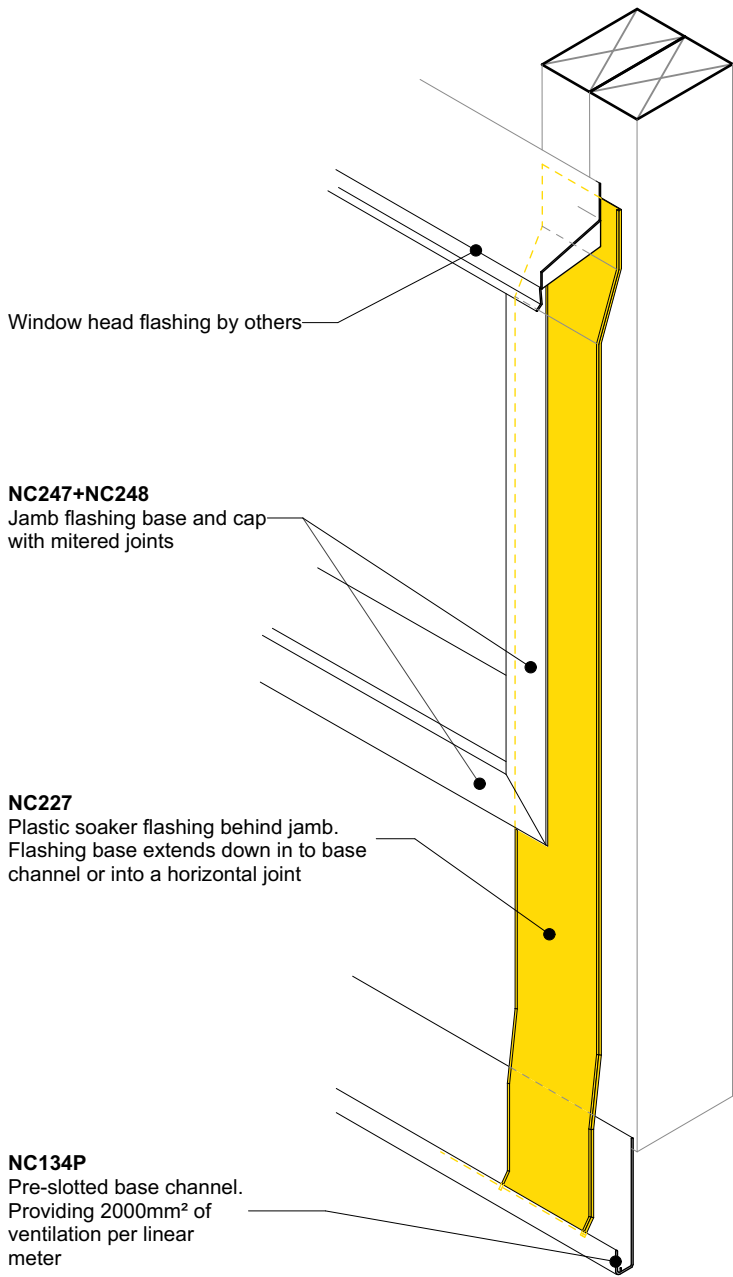


Nu-Wall cladding vertical direct fix  
Typical head section

NW-VDF-013.02

Drawn by: Nu-Wall	Date: 28/7/22
Checked by: RL, GT	Scale: 1:2 @ A4

© 2021 copyright in this document is the property of Nu-Wall Aluminium Cladding Limited. All rights reserved. Nu-Wall is a registered trademark of Aluminium Product Brands NZ Limited



Nu-Wall cladding vertical direct fix  
Soaker installation to window jamb

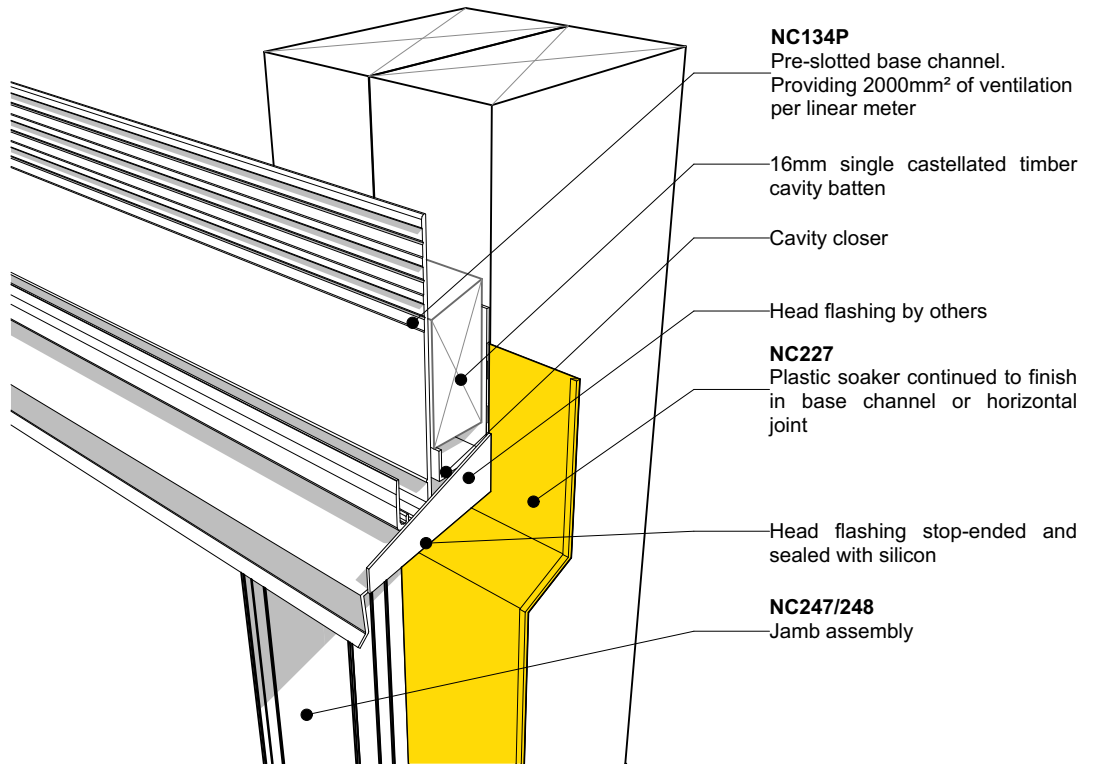
NW-VDF-014.02

Drawn by: Nu-Wall	Date: 28/7/22
Checked by: RL, GT	Scale: 1:2 @ A4

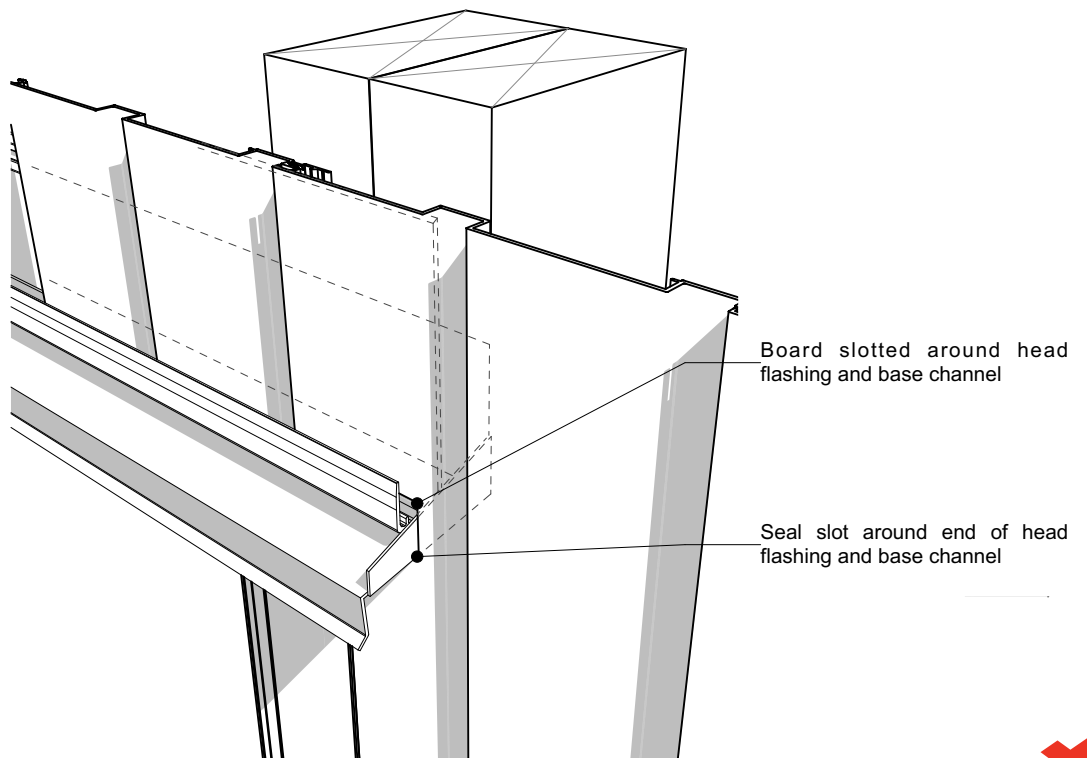
© 2021 copyright in this document is the property of Nu-Wall Aluminium Cladding Limited. All rights reserved. Nu-Wall is a registered trademark of Aluminium Product Brands NZ Limited



Junction prior to cladding around window head



Junction after cladding around window head



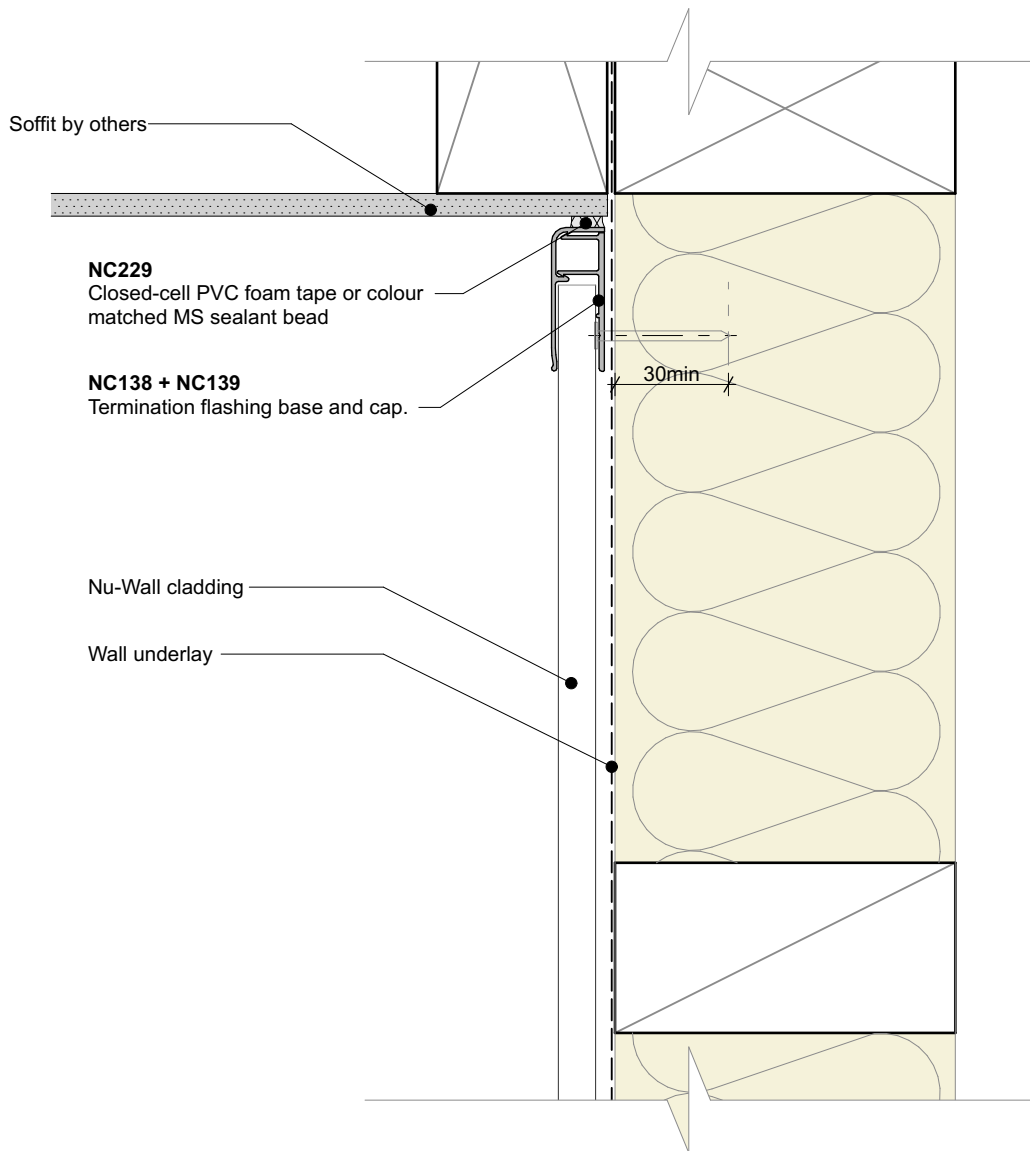
Nu-Wall cladding vertical direct fix  
Typical head flashing end detail

© 2021 copyright in this document is the property of Nu-Wall Aluminium Cladding Limited. All rights reserved. Nu-Wall is a registered trademark of Aluminium Product Brands NZ Limited

NW-VDF-015.02

Drawn by: Nu-Wall Date: 28/7/22

Checked by: RL, GT Scale: NTS



**General note:**  
 • Cladding fixings omitted for clarity

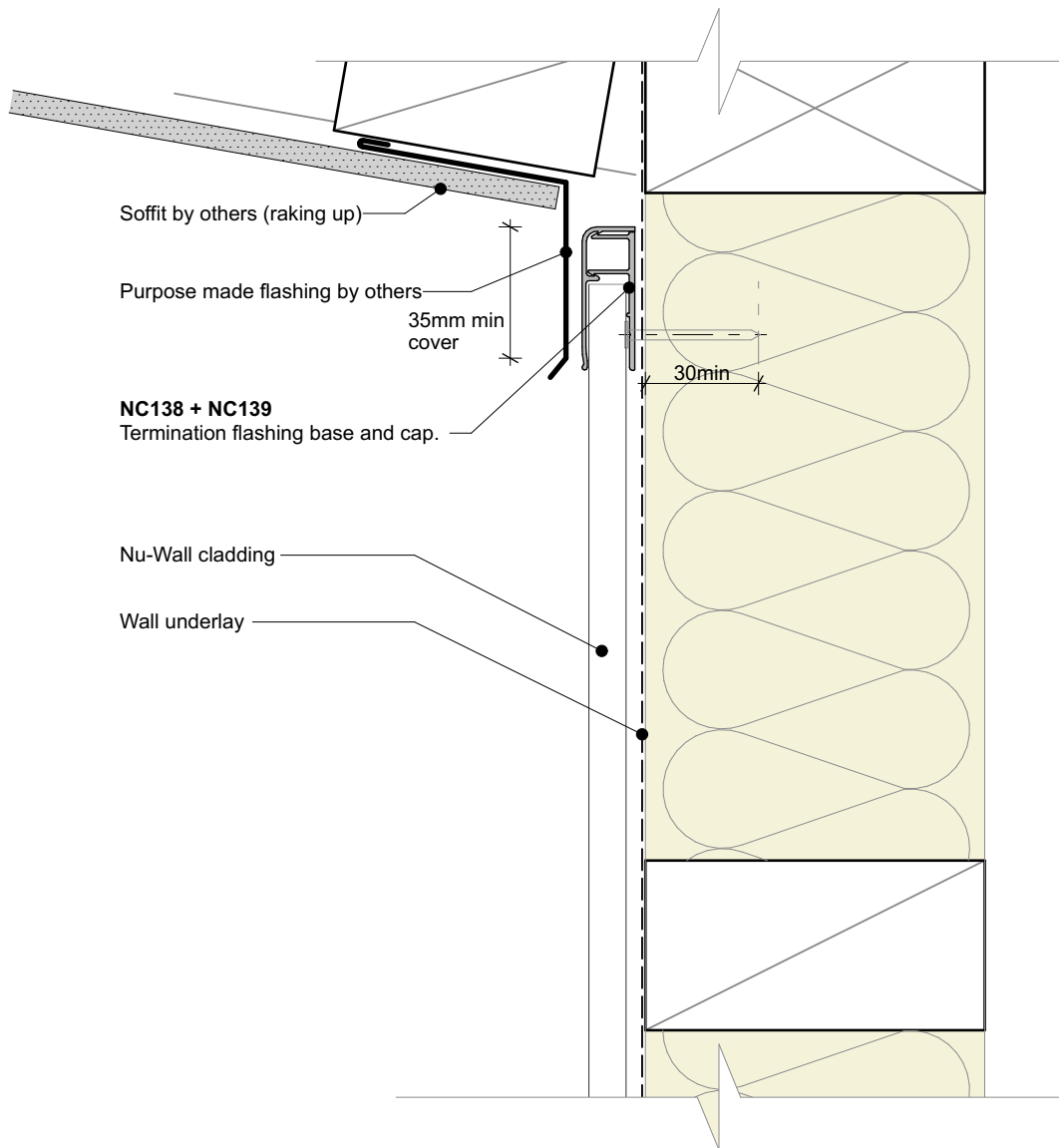


Nu-Wall cladding vertical direct fix  
 Typical soffit trim

NW-VDF-016a.02

Drawn by: Nu-Wall	Date: 28/7/22
Checked by: RL, GT	Scale: 1:2 @ A4

© 2021 copyright in this document is the property of Nu-Wall Aluminium Cladding Limited. All rights reserved. Nu-Wall is a registered trademark of Aluminium Product Brands NZ Limited



**General note:**  
 • Cladding fixings omitted for clarity

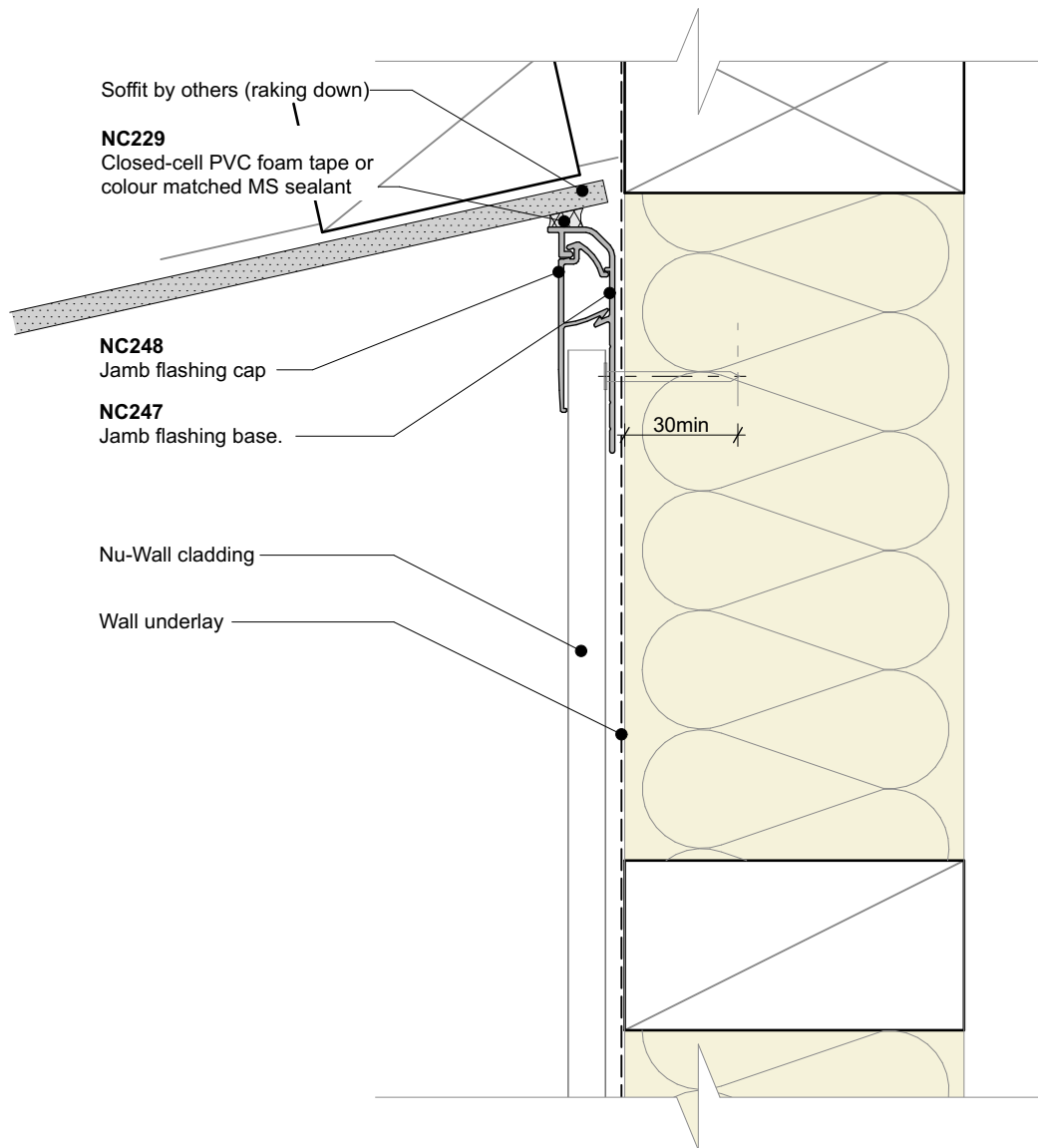


Nu-Wall cladding vertical direct fix  
 Typical raking soffit

NW-VDF-016b.02

Drawn by: Nu-Wall	Date: 28/7/22
Checked by: RL, GT	Scale: 1:2 @ A4

© 2021 copyright in this document is the property of Nu-Wall Aluminium Cladding Limited. All rights reserved. Nu-Wall is a registered trademark of Aluminium Product Brands NZ Limited



**General note:**  
 • Cladding fixings omitted for clarity



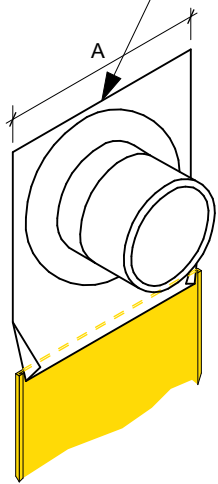
Nu-Wall cladding vertical direct fix  
 Typical inverse raking soffit

NW-VDF-016c.02

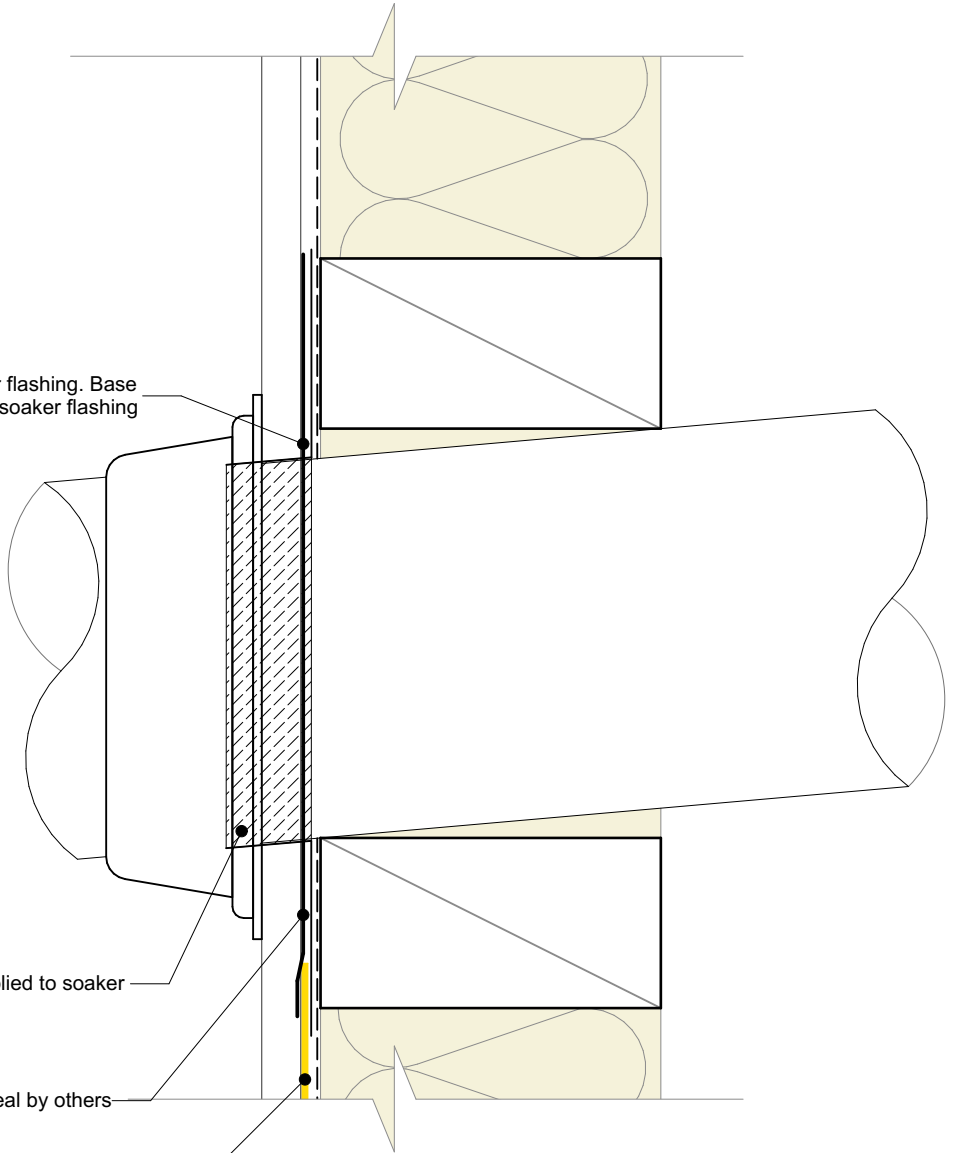
Drawn by: Nu-Wall	Date: 28/7/22
Checked by: RL, GT	Scale: 1:2 @ A4

© 2021 copyright in this document is the property of Nu-Wall Aluminium Cladding Limited. All rights reserved. Nu-Wall is a registered trademark of Aluminium Product Brands NZ Limited

A = Pipe diameter + 100mm



0.7mm Aluminium soaker flashing. Base tapered to fit in to plastic soaker flashing



Flexible flashing tape applied to soaker and pipe

Proprietary penetration seal by others

**NC227**  
Plastic soaker flashing. Base extends down in to base channel.

**General note:**  
• Cladding fixings omitted for clarity

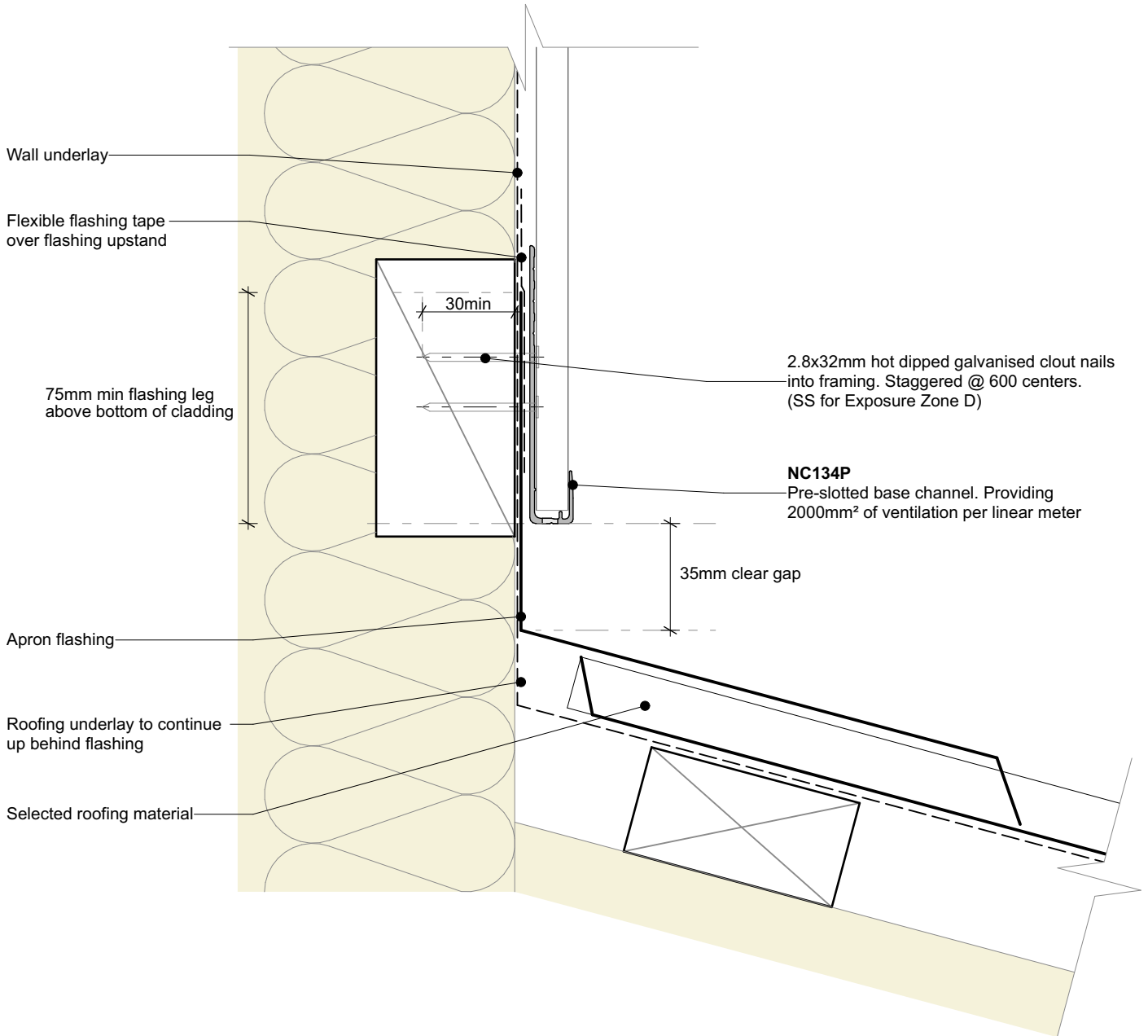


Nu-Wall cladding vertical direct fix  
Typical pipe penetration

NW-VDF-017.02

Drawn by: Nu-Wall	Date: 28/7/22
Checked by: RL, GT	Scale: 1:2 @ A4

© 2021 copyright in this document is the property of Nu-Wall Aluminium Cladding Limited. All rights reserved. Nu-Wall is a registered trademark of Aluminium Product Brands NZ Limited



**General note:**  
 • Cladding fixings omitted for clarity

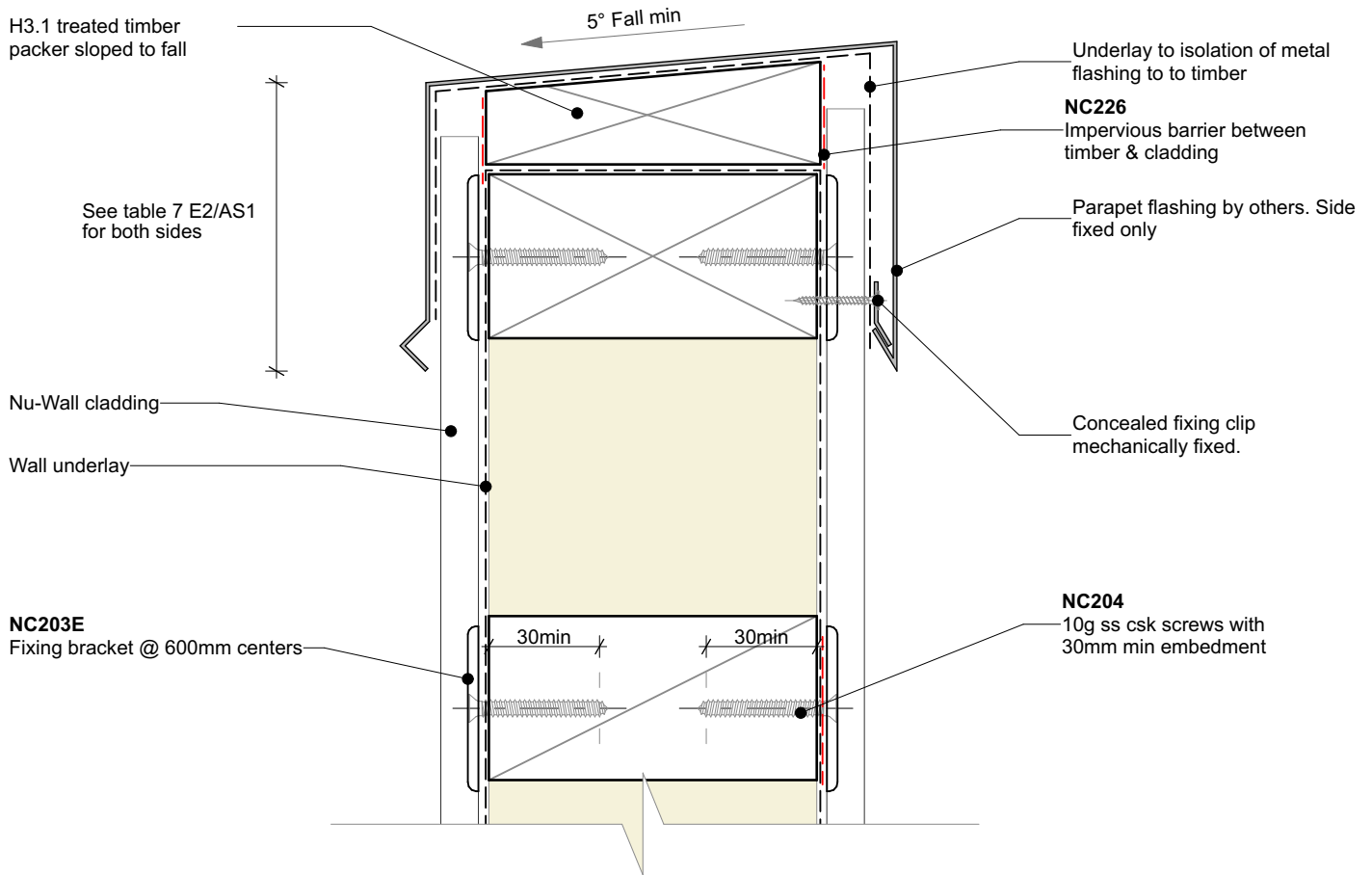


Nu-Wall cladding vertical direct fix  
 Typical apron, roof to wall junction

NW-VDF-018.02

Drawn by: Nu-Wall	Date: 28/7/22
Checked by: RL, GT	Scale: 1:2 @ A4

© 2021 copyright in this document is the property of Nu-Wall Aluminium Cladding Limited. All rights reserved. Nu-Wall is a registered trademark of Aluminium Product Brands NZ Limited



**General note:**  
 • Cladding fixings omitted for clarity

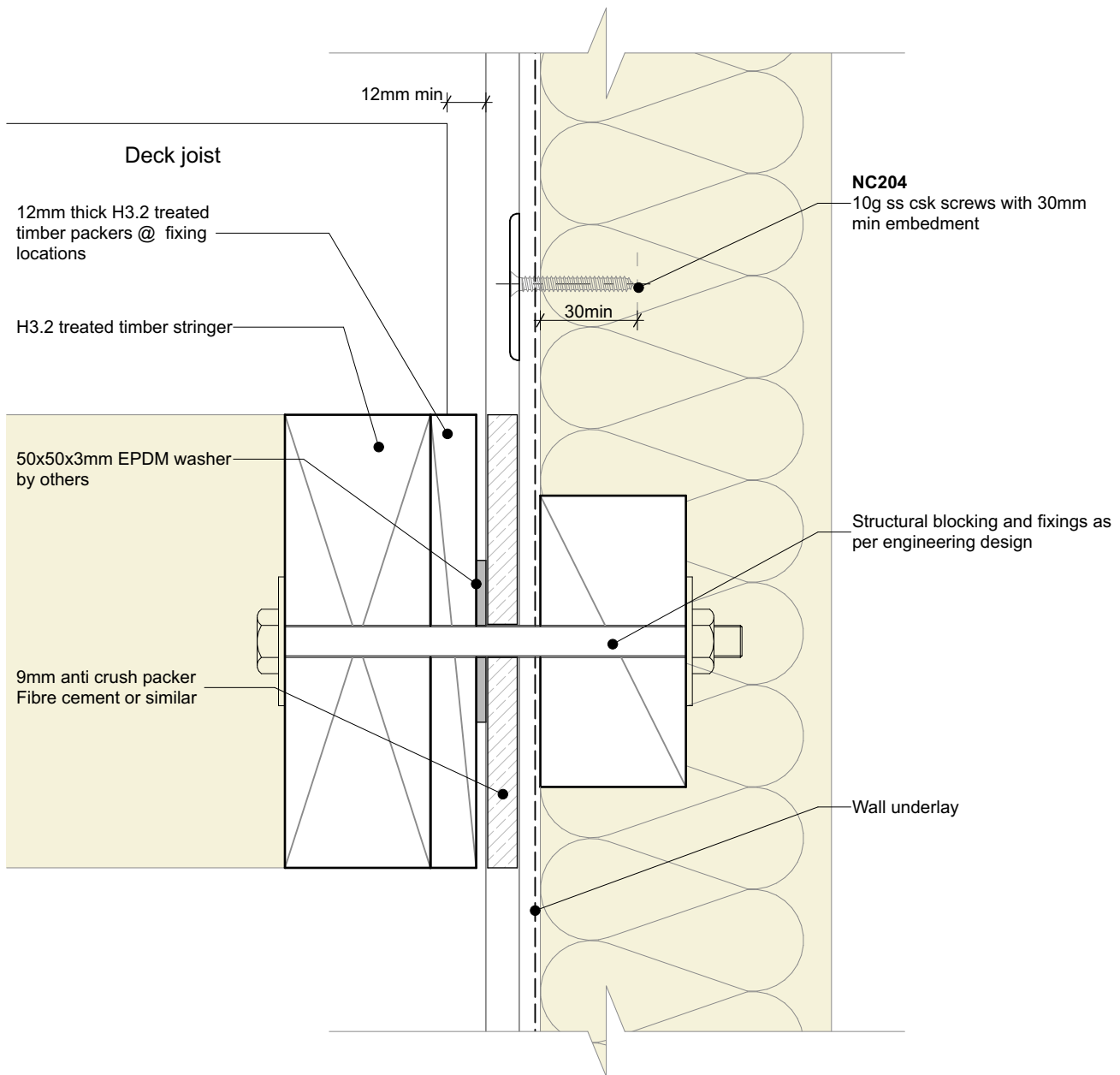


Nu-Wall cladding vertical direct fix  
 Typical parapet to wall

NW-VDF-019.02

Drawn by: Nu-Wall	Date: 28/7/22
Checked by: RL, GT	Scale: 1:2 @ A4

© 2021 copyright in this document is the property of Nu-Wall Aluminium Cladding Limited. All rights reserved. Nu-Wall is a registered trademark of Aluminium Product Brands NZ Limited



**Important:**

- Nu-Wall is a hollow profile and requires packers to prevent crushing under pressure

**General note:**

- Cladding fixings omitted for clarity



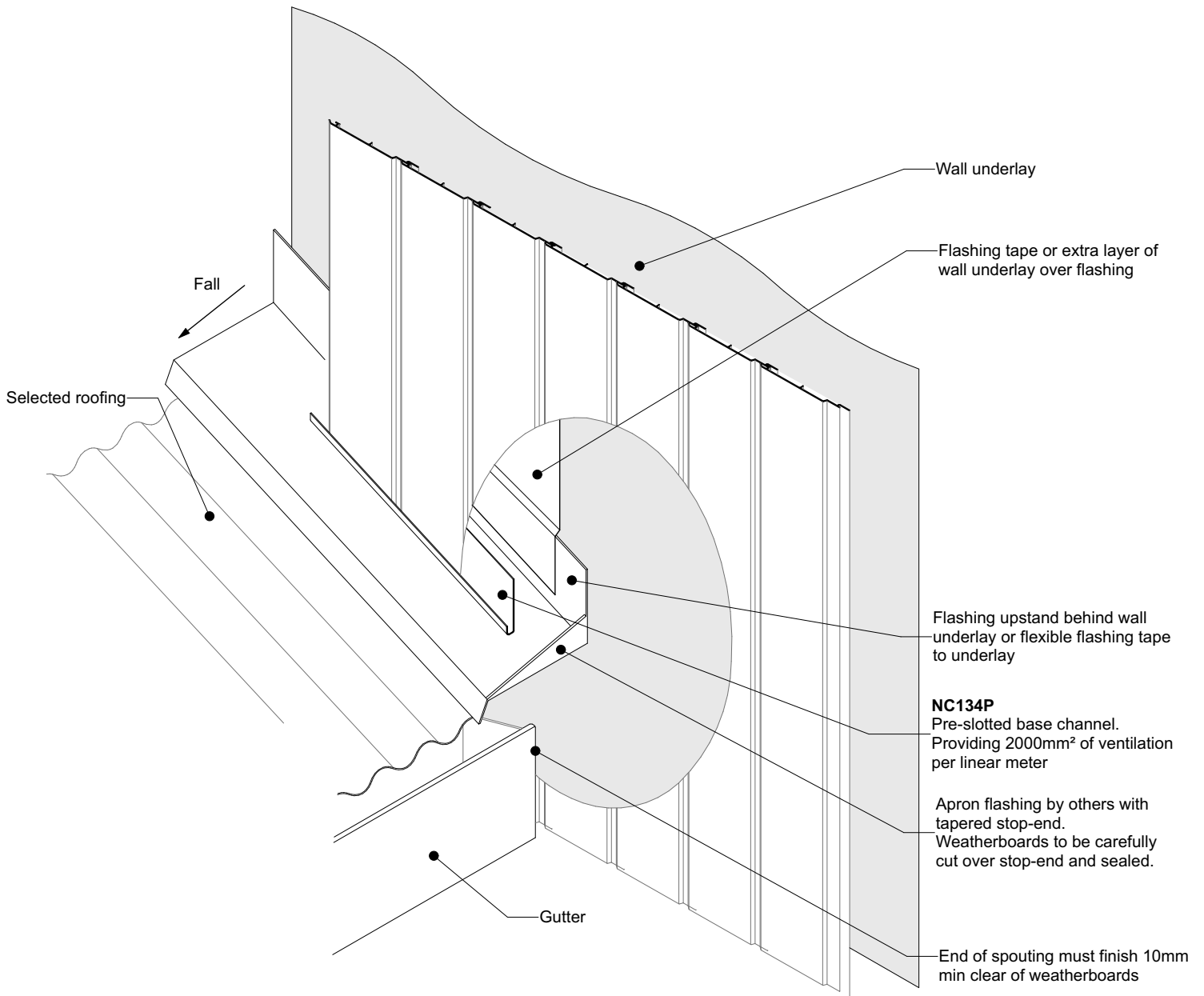
Nu-Wall cladding vertical direct fix  
Typical deck to wall junction

NW-VDF-020.02

Drawn by: Nu-Wall	Date: 28/7/22
Checked by: RL, GT	Scale: 1:2 @ A4

© 2021 copyright in this document is the property of Nu-Wall Aluminium Cladding Limited. All rights reserved. Nu-Wall is a registered trademark of Aluminium Product Brands NZ Limited





**General note:**  
 • Cladding fixings omitted for clarity

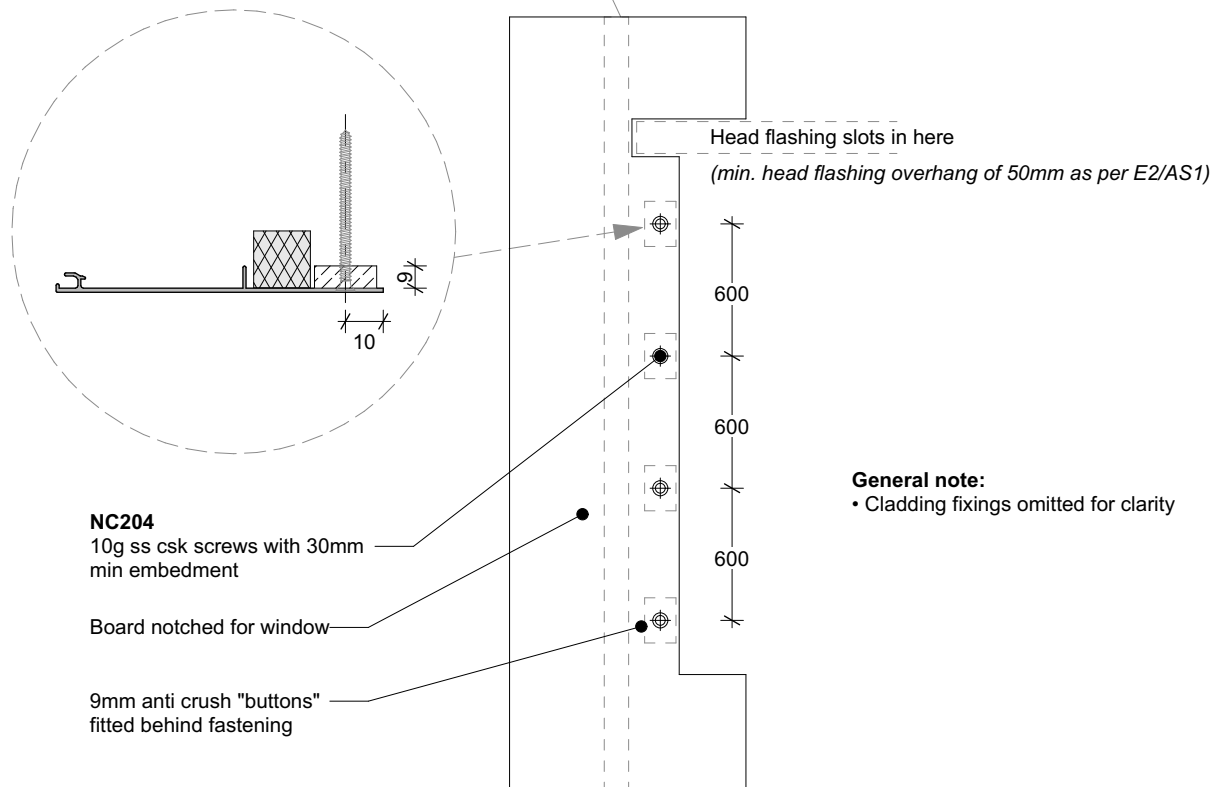
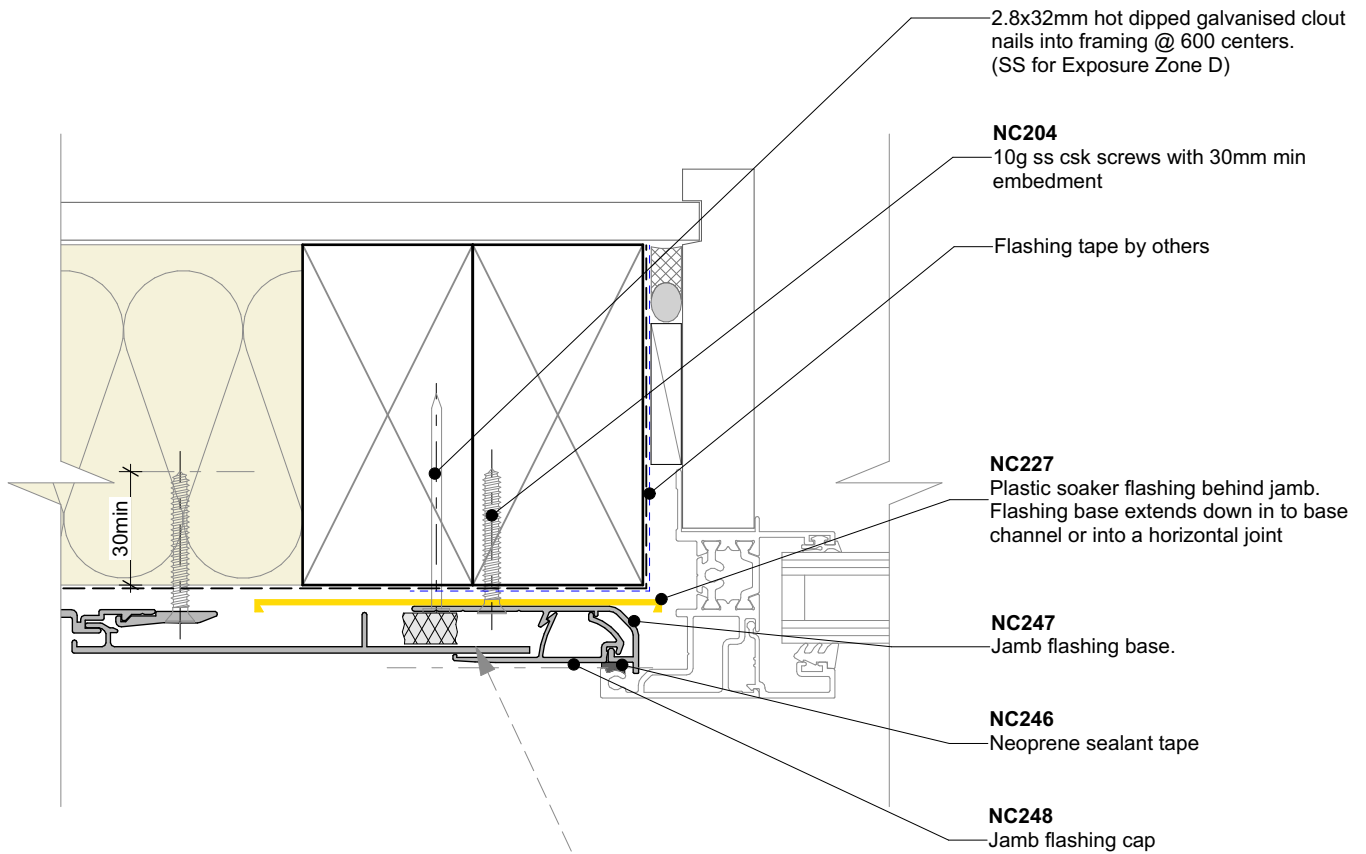


Nu-Wall cladding vertical direct fix  
 Typical roof and gutter to wall junction

NW-VDF-021.02

Drawn by: Nu-Wall	Date: 28/7/22
Checked by: RL, GT	Scale: 1:2 @ A4

© 2021 copyright in this document is the property of Nu-Wall Aluminium Cladding Limited. All rights reserved. Nu-Wall is a registered trademark of Aluminium Product Brands NZ Limited



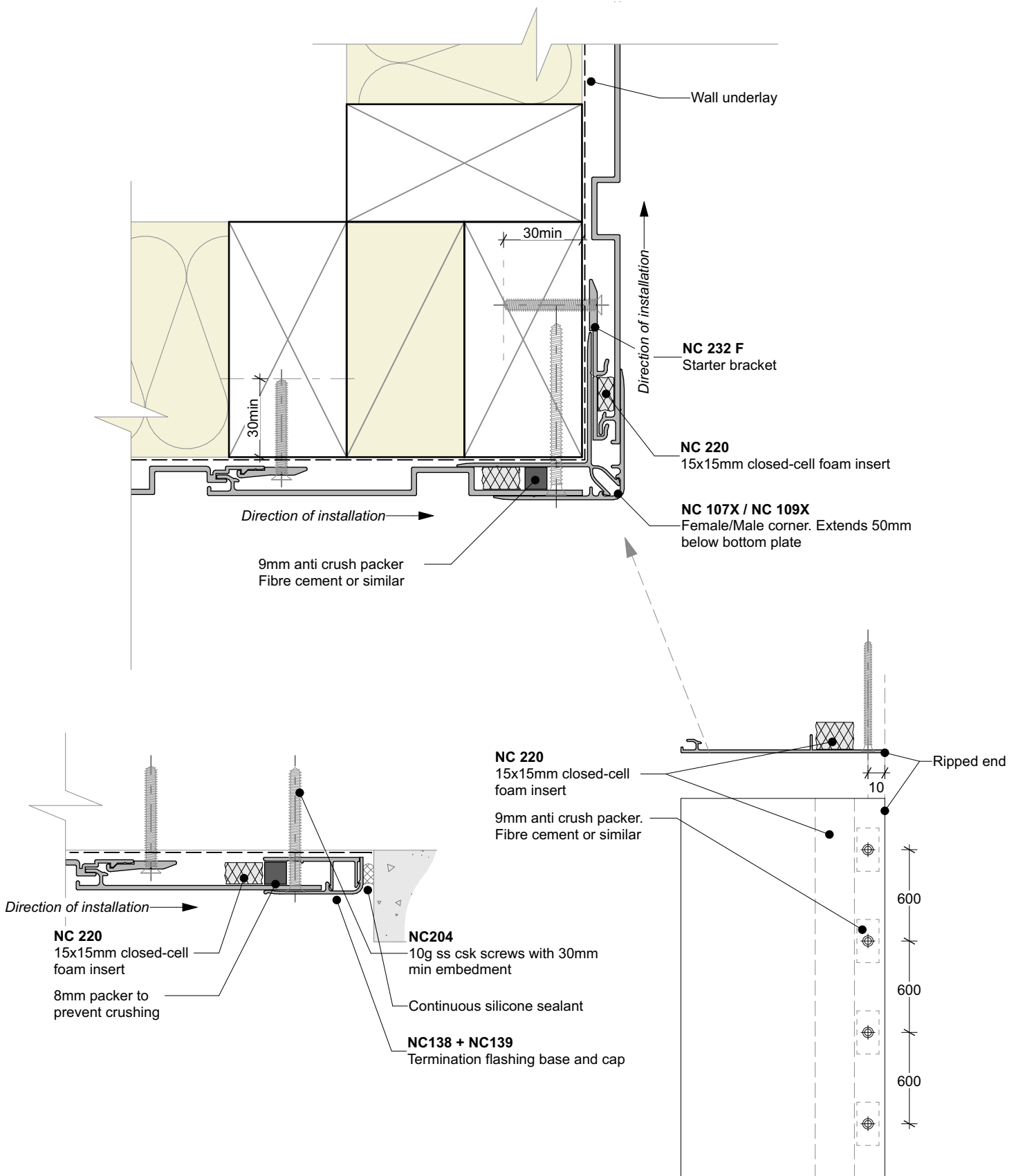
Nu-Wall cladding vertical direct fix  
Notching board around window jamb

NW-VDF-022.02

Drawn by: Nu-Wall Date: 28/7/22

Checked by: RL, GT Scale: NTS

© 2021 copyright in this document is the property of Nu-Wall Aluminium Cladding Limited. All rights reserved. Nu-Wall is a registered trademark of Aluminium Product Brands NZ Limited



**General note:**

- Cladding fixings omitted for clarity
- When finishing a wall with a ripped board, the board must be fixed with a counter sunk screw @ 600mm centres



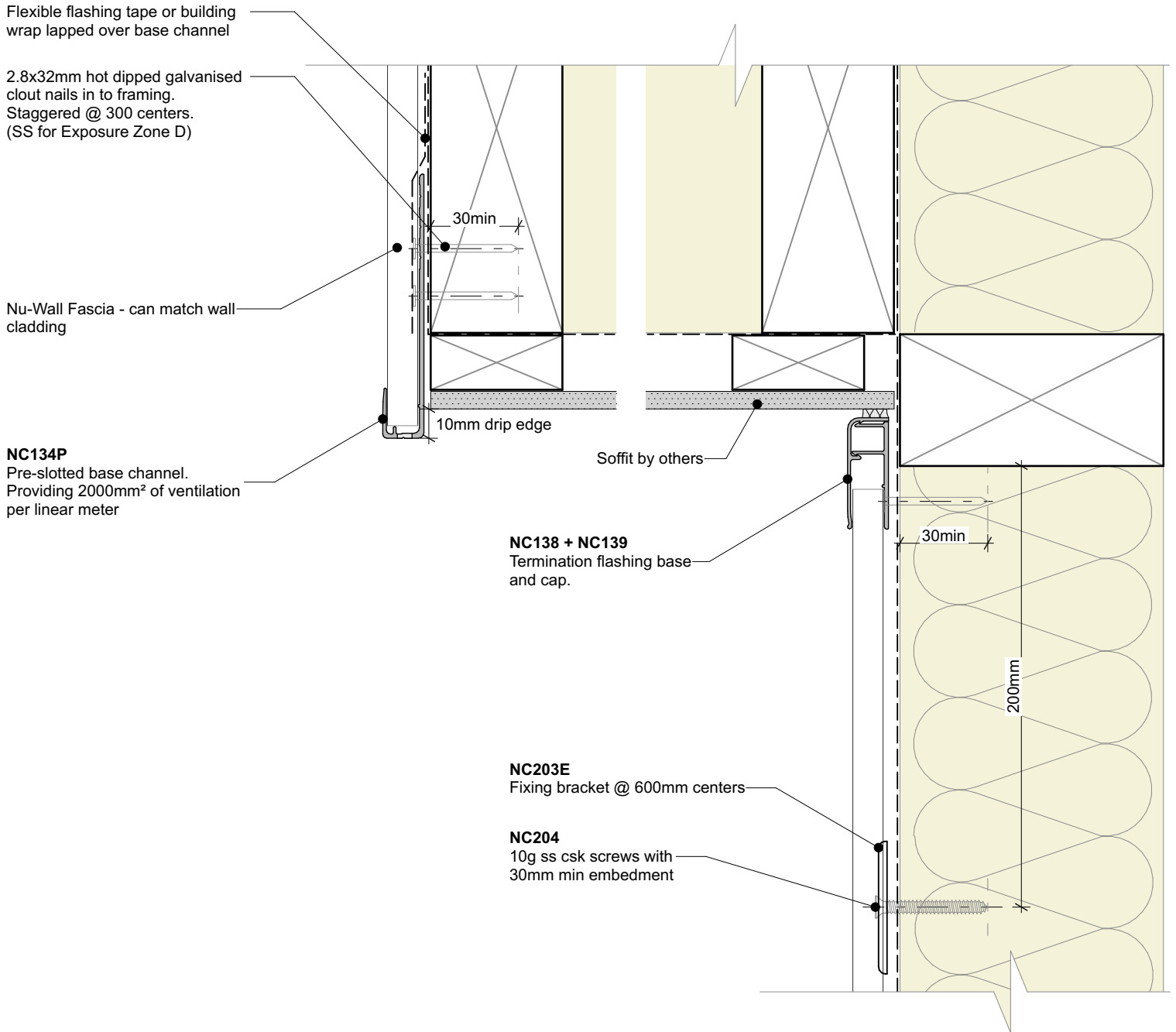
Nu-Wall cladding vertical direct fix  
Ripped board to end of wall junction

NW-VDF-023.02

Drawn by: Nu-Wall Date: 28/7/22

Checked by: RL, GT Scale: NTS

© 2021 copyright in this document is the property of Nu-Wall Aluminium Cladding Limited. All rights reserved. Nu-Wall is a registered trademark of Aluminium Product Brands NZ Limited



**General note:**  
 • Cladding fixings omitted for clarity

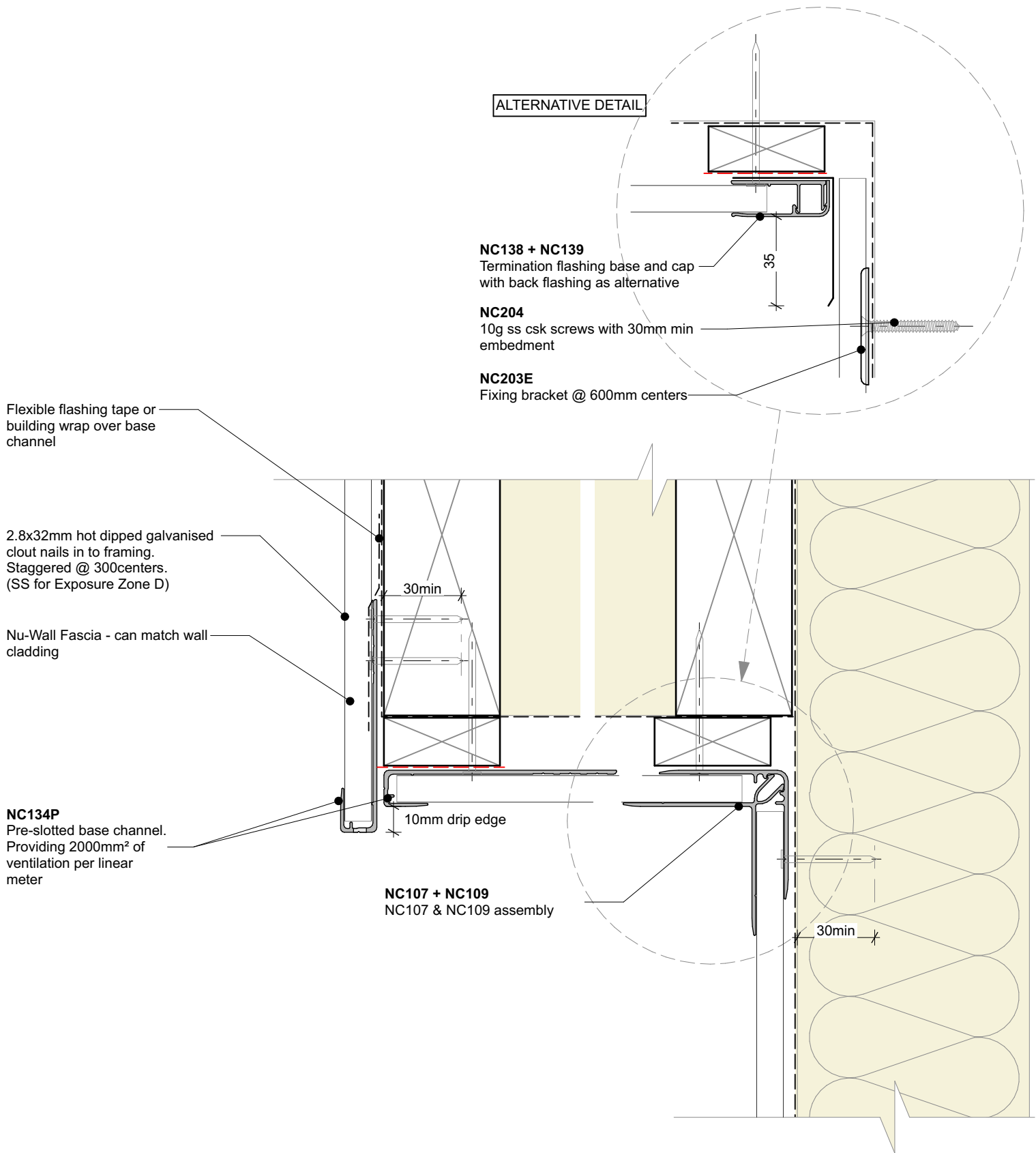


Nu-Wall cladding vertical direct fix  
 Typical Nu-Wall fascia to soffit

NW-VDF-024.02

Drawn by: Nu-Wall	Date: 28/7/22
Checked by: RL, GT	Scale: 1:2 @ A4

© 2021 copyright in this document is the property of Nu-Wall Aluminium Cladding Limited. All rights reserved. Nu-Wall is a registered trademark of Aluminium Product Brands NZ Limited



**General note:**  
 • Cladding fixings omitted for clarity

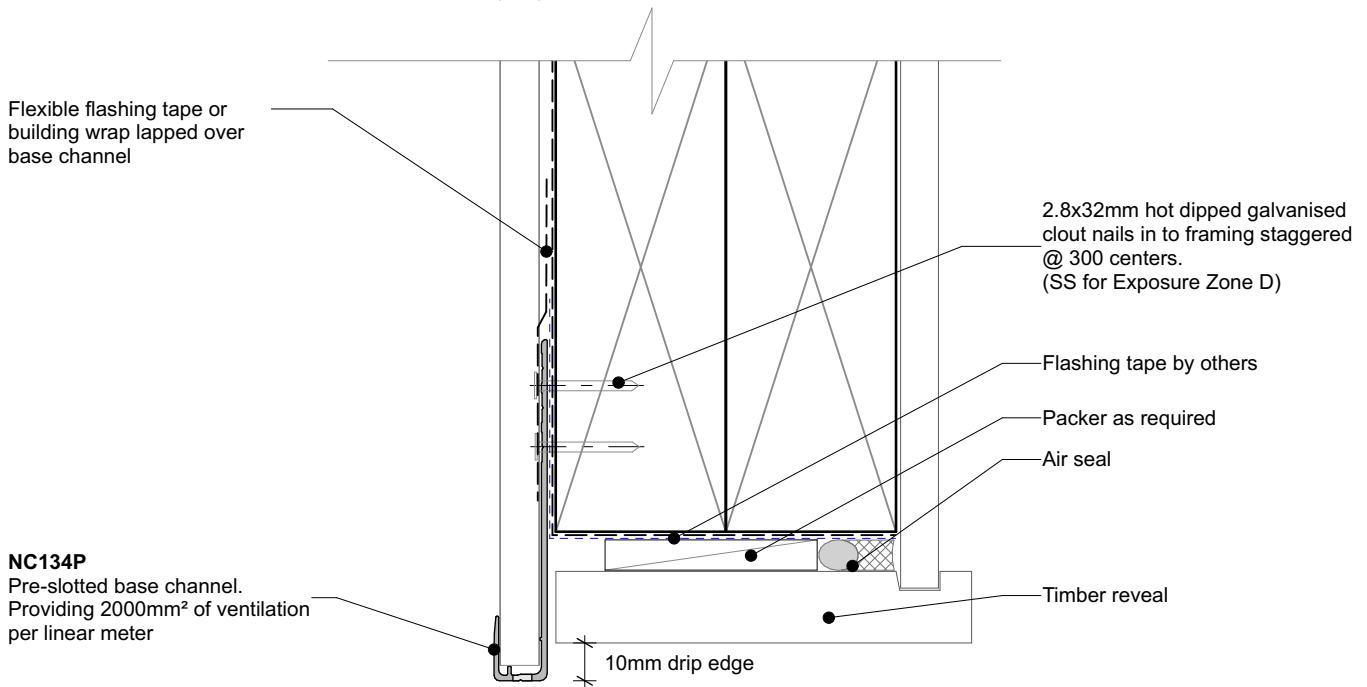


Nu-Wall cladding vertical direct fix  
 Typical Nu-Wall to fascia - soffit - wall (with alternative)

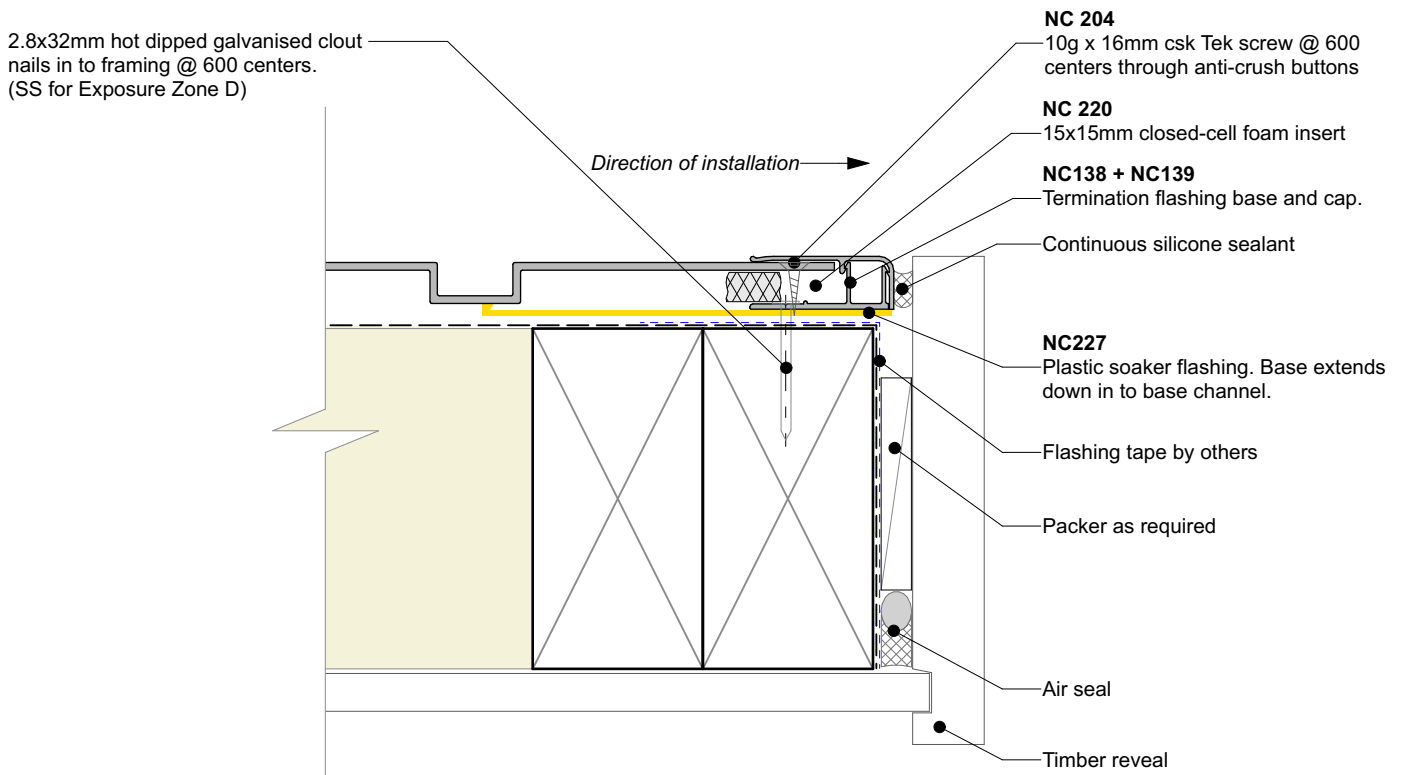
NW-VDF-025.02

Drawn by: Nu-Wall	Date: 28/7/22
Checked by: RL, GT	Scale: 1:2 @ A4

© 2021 copyright in this document is the property of Nu-Wall Aluminium Cladding Limited. All rights reserved. Nu-Wall is a registered trademark of Aluminium Product Brands NZ Limited



GARAGE DOOR HEAD (Timber reveal)



GARAGE DOOR JAMB (Timber reveal)

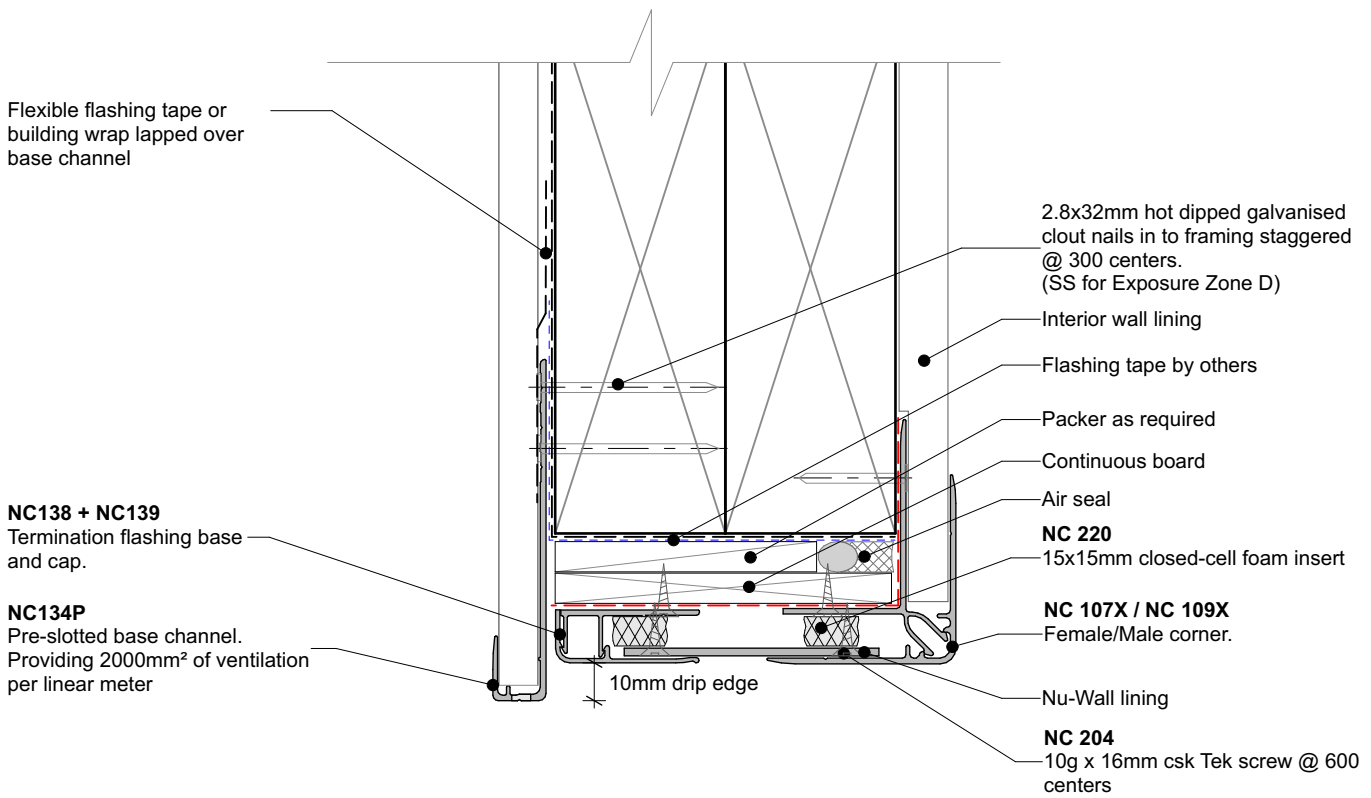


Nu-Wall cladding vertical direct fix  
 Typical garage door head - jamb (Timber reveal)

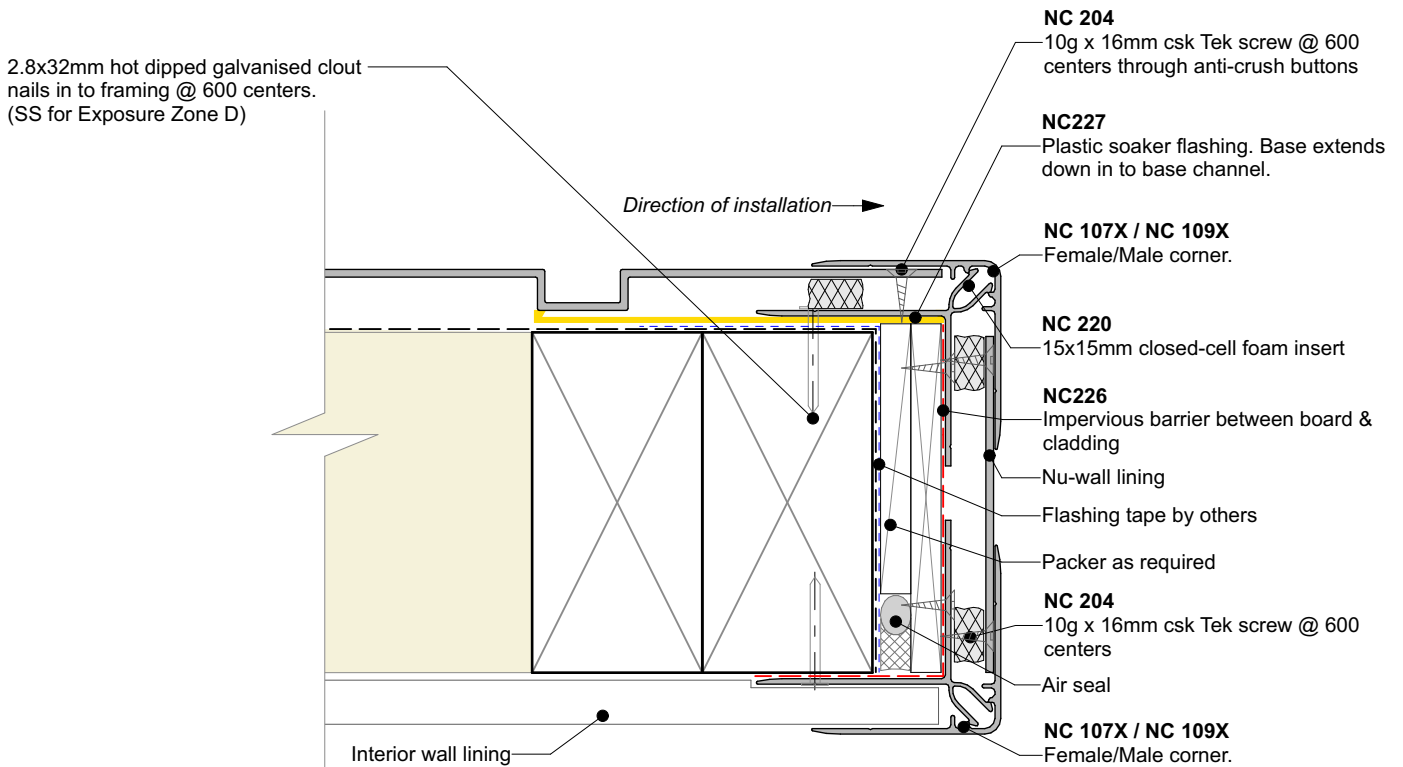
NW-VDF-026.02

Drawn by: Nu-Wall	Date: 28/7/22
Checked by: RL, GT	Scale: 1:2 @ A4

© 2021 copyright in this document is the property of Nu-Wall Aluminium Cladding Limited. All rights reserved. Nu-Wall is a registered trademark of Aluminium Product Brands NZ Limited



**GARAGE DOOR HEAD (Nu-Wall reveal)**



**GARAGE DOOR JAMB (Nu-Wall reveal)**

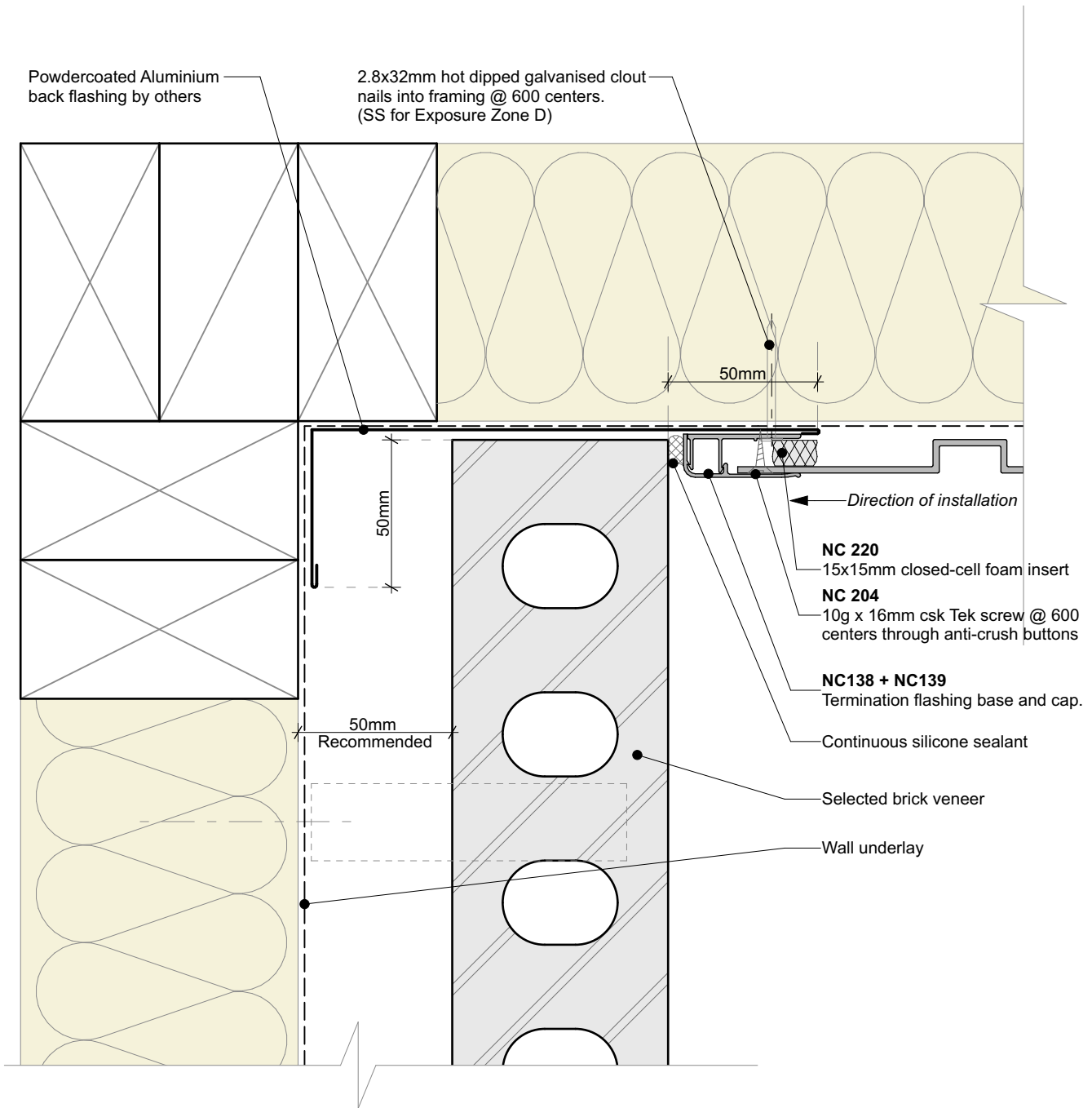


Nu-Wall cladding vertical direct fix  
 Typical garage door head - jamb (Nu-Wall Reveal Profile)

NW-VDF-026b.02

Drawn by: Nu-Wall	Date: 28/7/22
Checked by: RL, GT	Scale: 1:2 @ A4

© 2021 copyright in this document is the property of Nu-Wall Aluminium Cladding Limited. All rights reserved. Nu-Wall is a registered trademark of Aluminium Product Brands NZ Limited



**General note:**

- Cladding fixings omitted for clarity
- When finishing a wall with a ripped board, the board must be direct fixed with a counter sunk screw @ 600mm centres



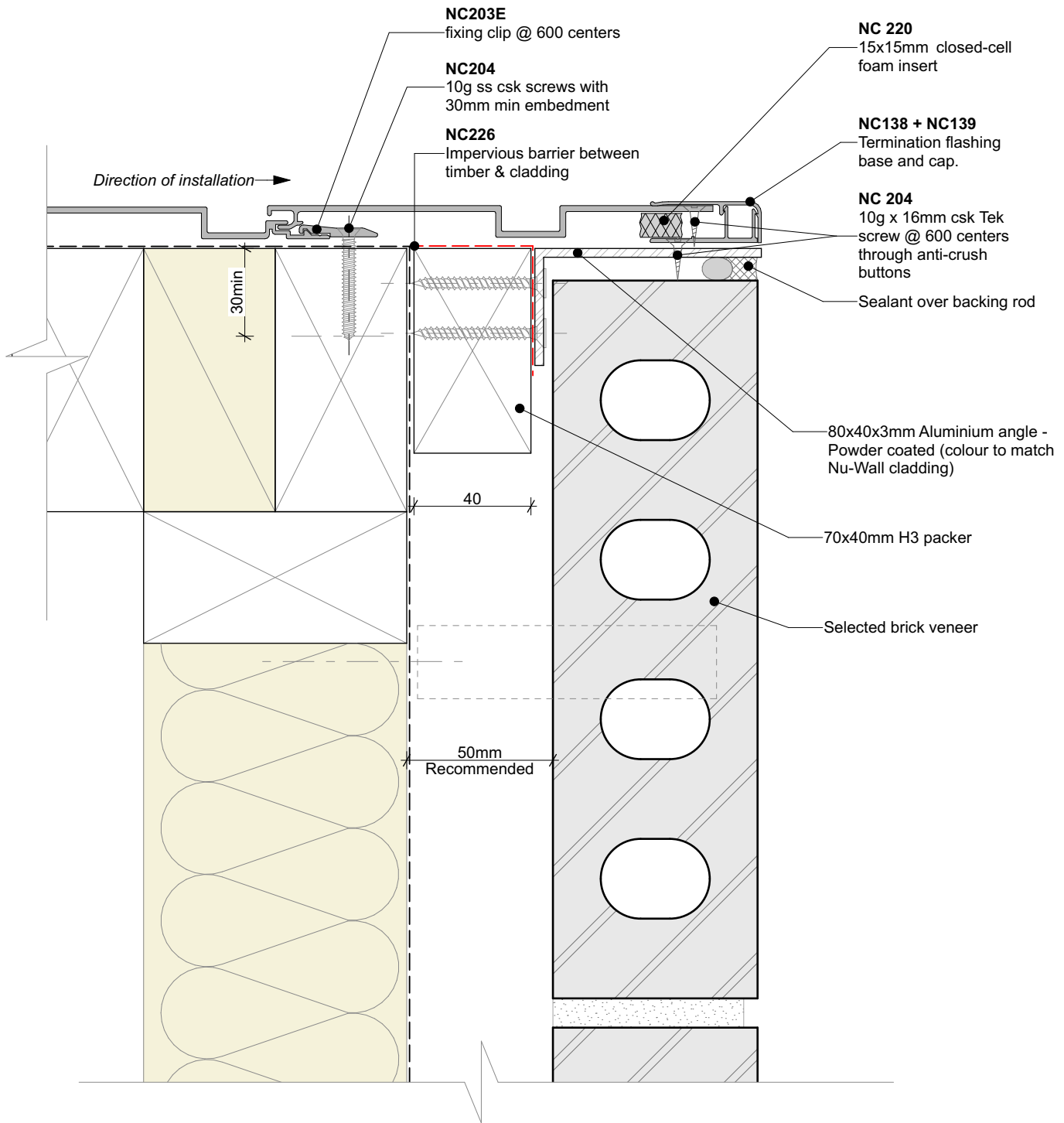
Nu-Wall cladding vertical direct fix  
Typical Nu-Wall to brick internal corner

NW-VDF-027.02

Drawn by: Nu-Wall	Date: 28/7/22
Checked by: RL, GT	Scale: 1:2 @ A4

© 2021 copyright in this document is the property of Nu-Wall Aluminium Cladding Limited. All rights reserved. Nu-Wall is a registered trademark of Aluminium Product Brands NZ Limited





**General note:**

- Cladding fixings omitted for clarity
- When finishing a wall with a ripped board, the board must be direct fixed with a counter sunk screw @ 600mm centres

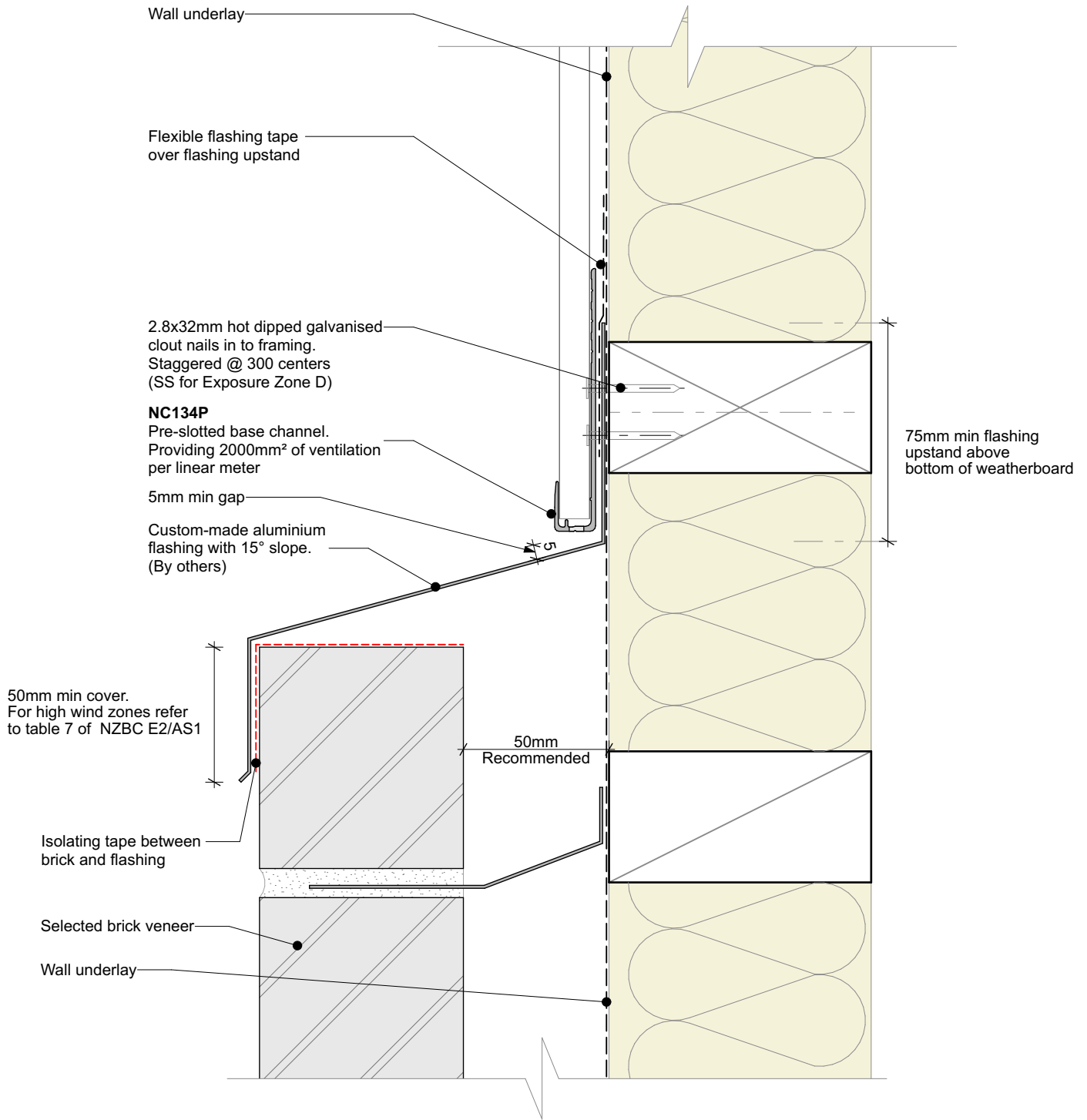


Nu-Wall cladding vertical direct fix  
 Typical Nu-Wall to brick external corner NC138 and NC139

NW-VDF-028.02

Drawn by: Nu-Wall	Date: 28/7/22
Checked by: RL, GT	Scale: 1:2 @ A4

© 2021 copyright in this document is the property of Nu-Wall Aluminium Cladding Limited. All rights reserved. Nu-Wall is a registered trademark of Aluminium Product Brands NZ Limited

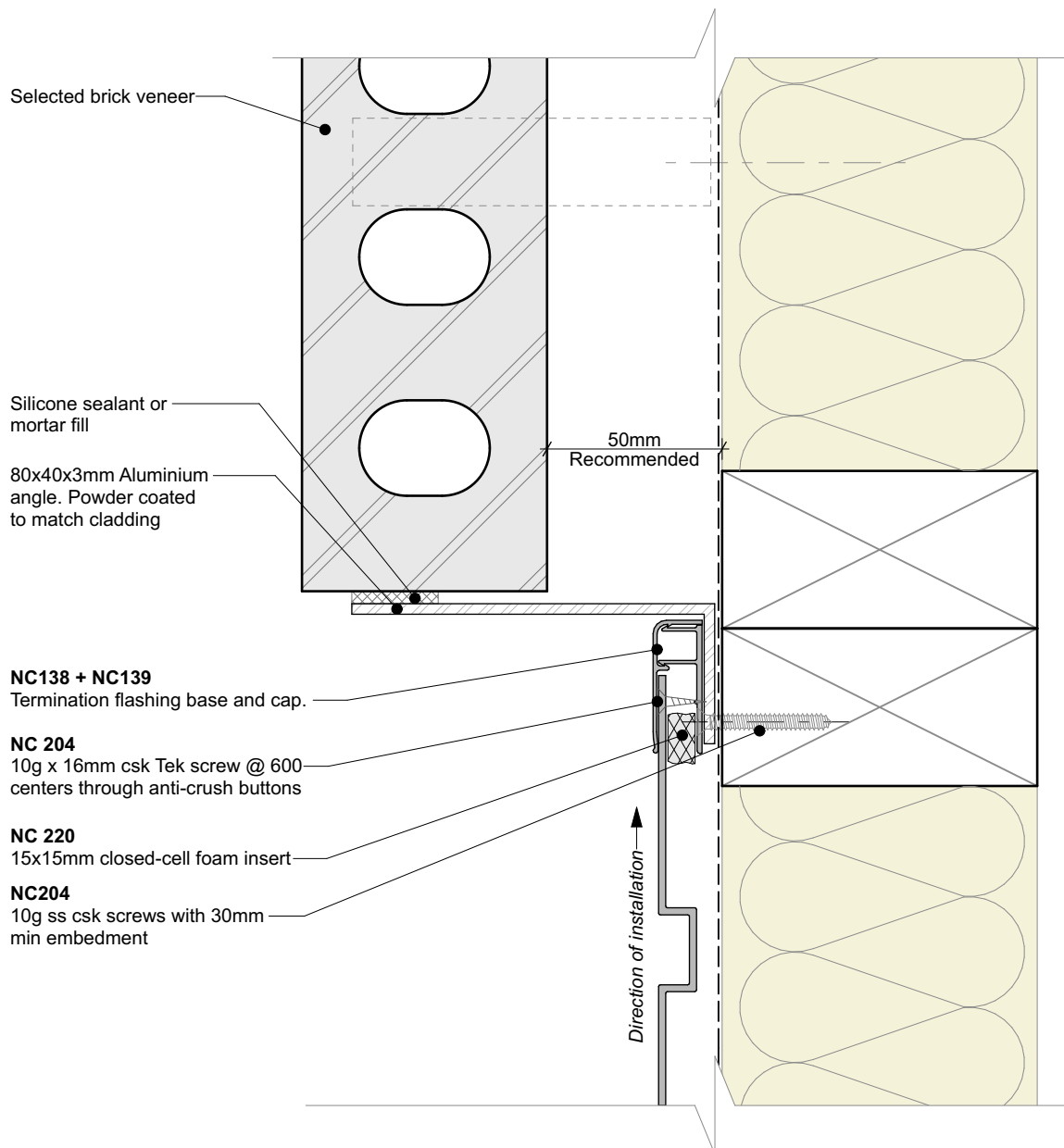


Nu-Wall cladding vertical direct fix  
 Typical Nu-Wall to brick horizontal junction

NW-VDF-029.02

Drawn by: Nu-Wall	Date: 28/7/22
Checked by: RL, GT	Scale: 1:2 @ A4

© 2021 copyright in this document is the property of Nu-Wall Aluminium Cladding Limited. All rights reserved. Nu-Wall is a registered trademark of Aluminium Product Brands NZ Limited



**General note:**

- Cladding fixings omitted for clarity
- When finishing a wall with a ripped board, the board must be direct fixed with a counter sunk screw @ 600mm centres

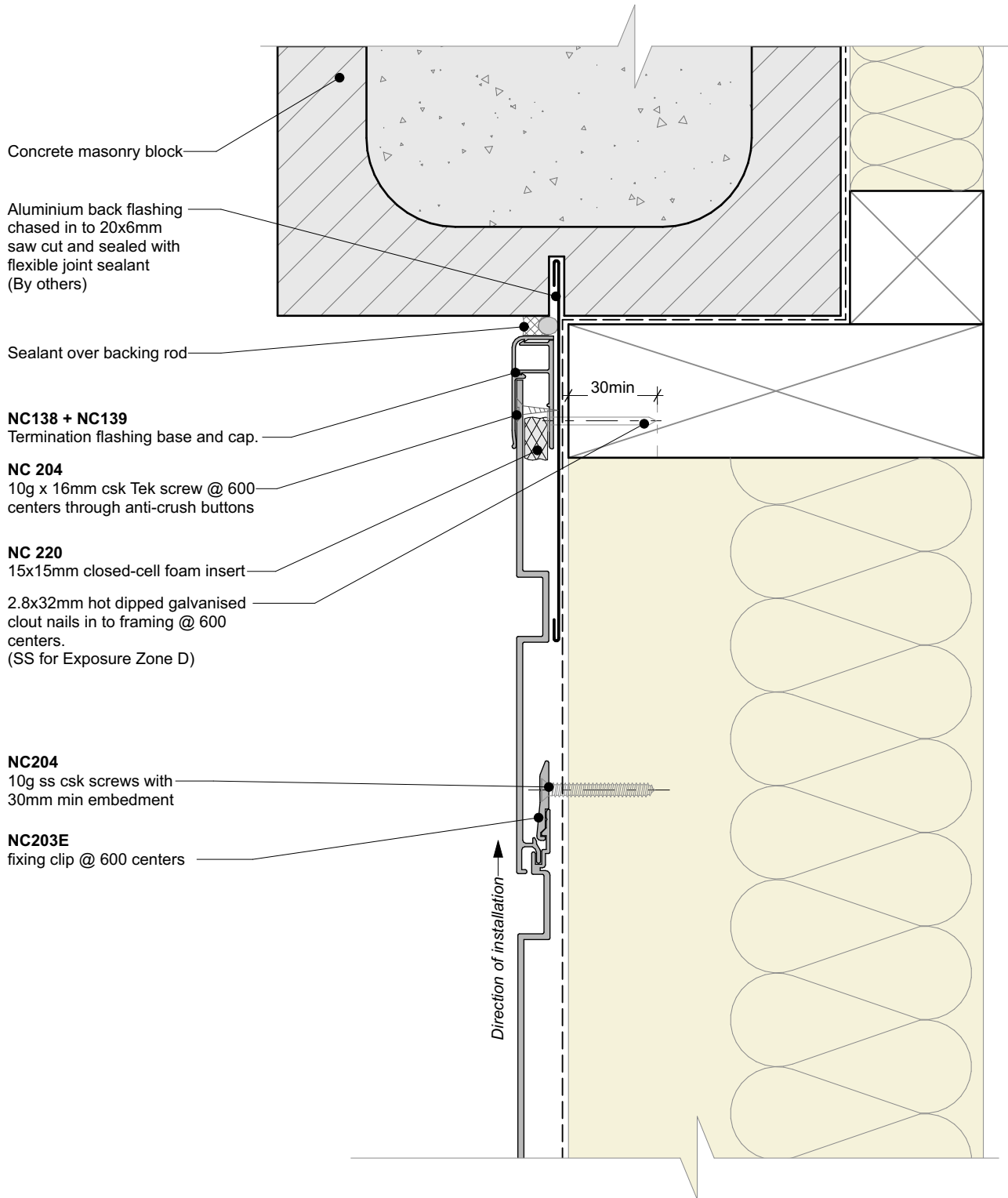


Nu-Wall cladding vertical direct fix  
Typical Nu-Wall to brick vertical junction

NW-VDF-030.02

Drawn by: Nu-Wall	Date: 28/7/22
Checked by: RL, GT	Scale: 1:2 @ A4

© 2021 copyright in this document is the property of Nu-Wall Aluminium Cladding Limited. All rights reserved. Nu-Wall is a registered trademark of Aluminium Product Brands NZ Limited



**General note:**

- Cladding fixings omitted for clarity
- When finishing a wall with a ripped board, the board must be direct fixed with a counter sunk screw @ 600mm centres



Nu-Wall cladding vertical direct fix  
 Typical Nu-Wall to concrete masonry vertical junction

NW-VDF-031.02

Drawn by: Nu-Wall	Date: 28/7/22
Checked by: RL, GT	Scale: 1:2 @ A4

© 2021 copyright in this document is the property of Nu-Wall Aluminium Cladding Limited. All rights reserved. Nu-Wall is a registered trademark of Aluminium Product Brands NZ Limited

Custom folded 1.2mm aluminium flashing powder coated to match cladding and chased in to 15x6mm saw cut and sealed with flexible joint sealant (By others)

Crushed

**NC138 + NC139**  
Termination flashing base and cap.

**NC 204**  
10g x 16mm csk Tek screw @ 600 centers through anti-crush buttons

**NC 220**  
15x15mm closed-cell foam insert

Concrete masonry block wall

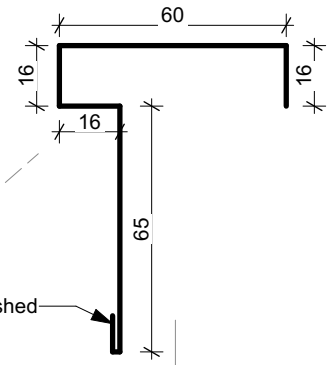
Cut / ripped board

**NC204**  
10g ss csk screws with 30mm min embedment

**NC203E**  
fixing clip @ 600 centers

Direction of installation

30min



**General note:**

- Cladding fixings omitted for clarity
- When finishing a wall with a ripped board, the board must be direct fixed with a counter sunk screw @ 600mm centres

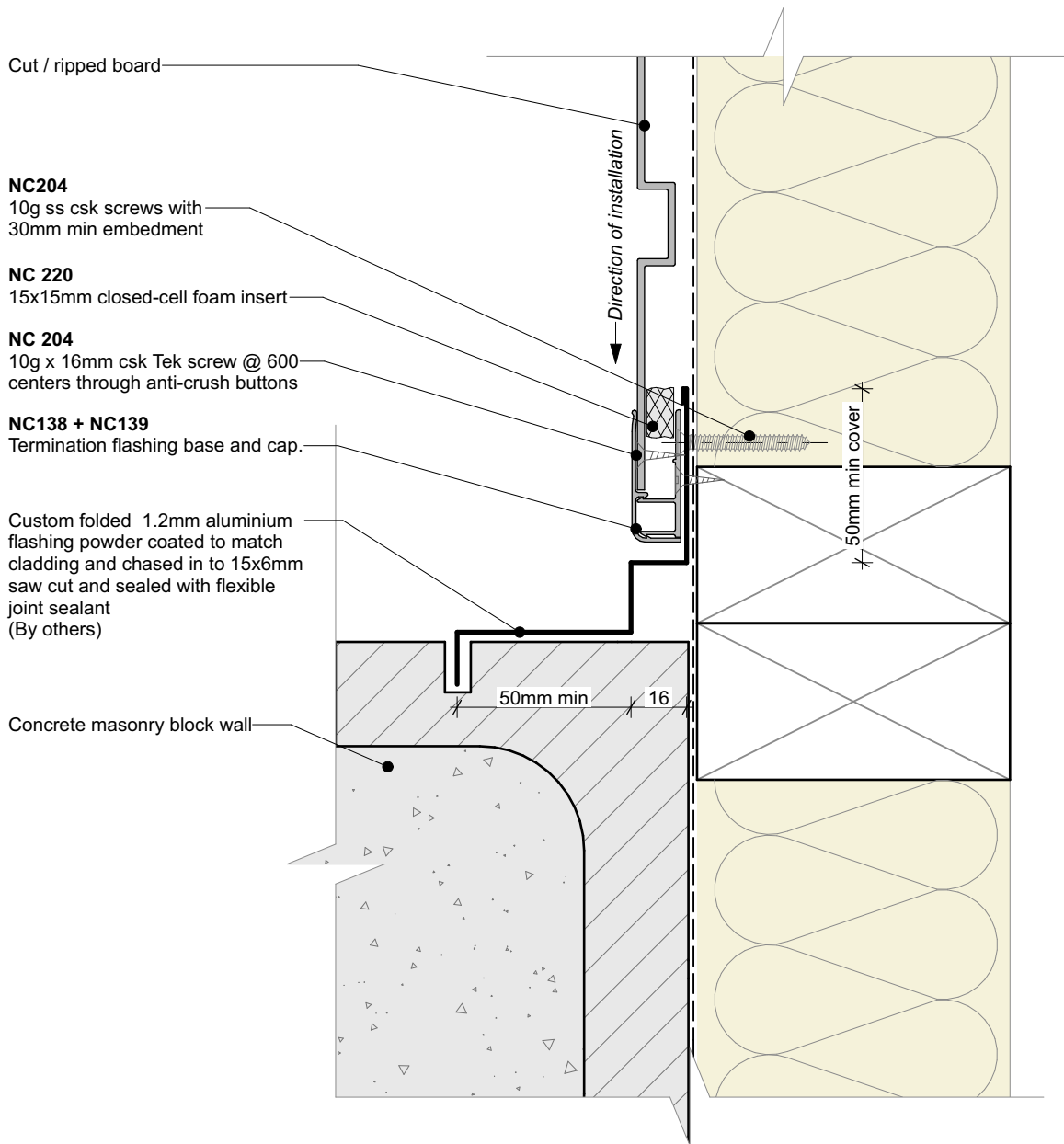


Nu-Wall cladding vertical direct fix  
Typical Nu-Wall to concrete masonry external corner

NW-VDF-032.02

Drawn by: Nu-Wall	Date: 28/7/22
Checked by: RL, GT	Scale: 1:2 @ A4

© 2021 copyright in this document is the property of Nu-Wall Aluminium Cladding Limited. All rights reserved. Nu-Wall is a registered trademark of Aluminium Product Brands NZ Limited



**General note:**

- Cladding fixings omitted for clarity
- When finishing a wall with a ripped board, the board must be direct fixed with a counter sunk screw @ 600mm centres



Nu-Wall cladding vertical direct fix  
 Typical Nu-Wall to concrete masonry internal corner

NW-VDF-033.02

Drawn by: Nu-Wall	Date: 28/7/22
Checked by: RL, GT	Scale: 1:2 @ A4

© 2021 copyright in this document is the property of Nu-Wall Aluminium Cladding Limited. All rights reserved. Nu-Wall is a registered trademark of Aluminium Product Brands NZ Limited