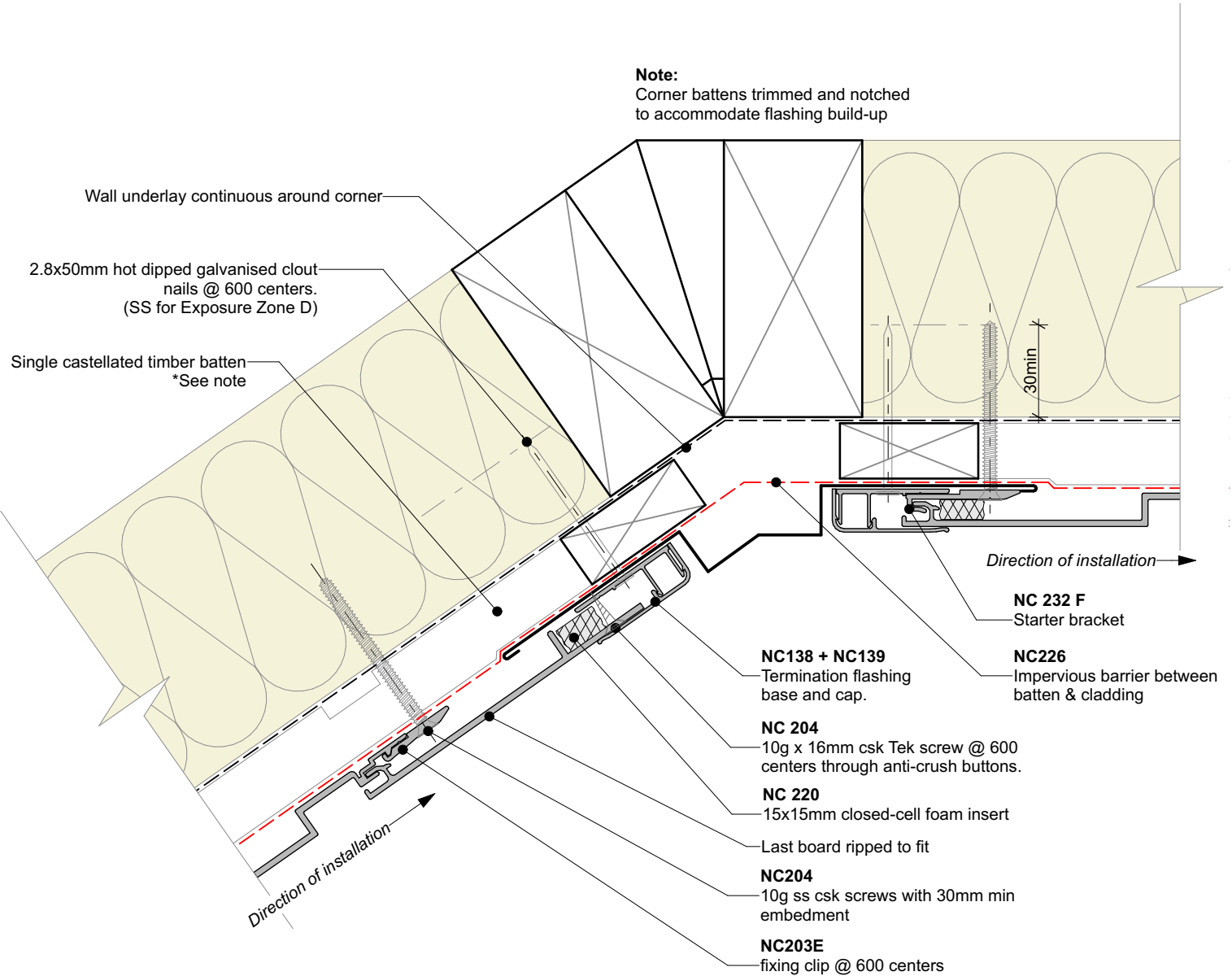


**Note:**  
Corner battens trimmed and notched to accommodate flashing build-up



**General note:**

- Cladding fixings omitted for clarity
- When finishing a wall with a ripped board, the board must be direct fixed with a counter sunk screw @ 600mm centres

**Cavity batten note:**

- 20mm single castellated timber battens required for all Nu-Wall installations.
- Batten to have 15° slope for moisture egress
- 18mm single castellated battens are available from Nu Wall for all vertical applications to wall junctions and jambs
- Proprietary Nu-Wall Alibat is available as an alternative when a structural non-combustable cavity batten is required



Nu-Wall cladding vertical on cavity  
Typical Nu-Wall irregular internal corner flashing

NW-VOC-041.02

|                    |                 |
|--------------------|-----------------|
| Drawn by: Nu-Wall  | Date: 21/9/22   |
| Checked by: RL, GT | Scale: 1:2 @ A4 |

© 2021 copyright in this document is the property of Nu-Wall Aluminium Cladding Limited. All rights reserved. Nu-Wall is a registered trademark of Aluminium Product Brands NZ Limited