

NC204

10g ss csk screws with 30mm min embedment

H3.2 vertical timber batten
*See note

Rigid Air Barrier

INSERT 154

15mm profiled closed-cell foam insert end caps. Fixed in place with silicone sealant.

NC105X + NC103

Extended jointer cap over Jointer base

NC250

Square termination flashing.

NC 204

10g x 16mm csk Tek screw @ 600 centers through anti-crush buttons

NC 220

15x15mm closed-cell foam insert

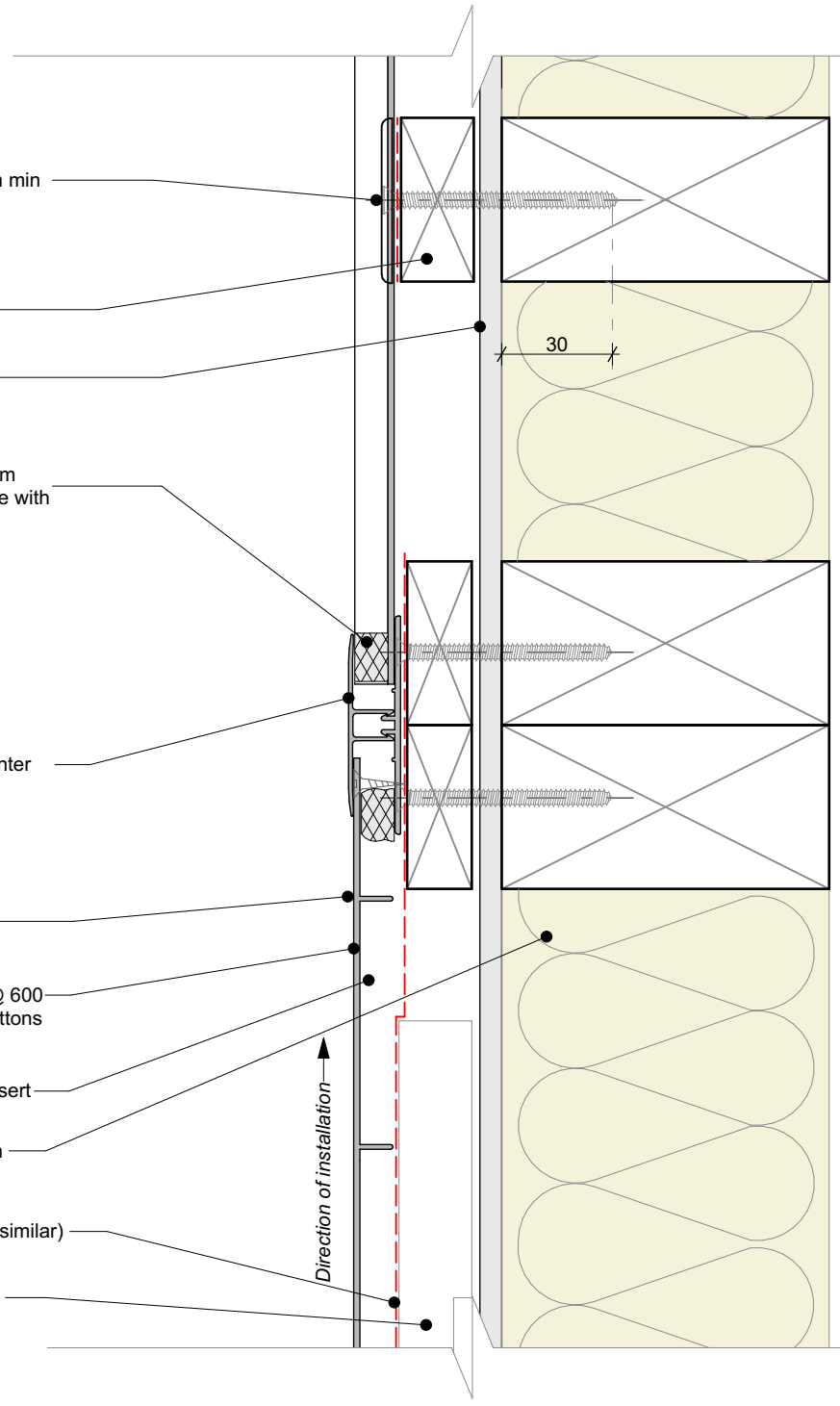
NC204

10g ss csk screws with 30mm min embedment

NC226

Impervious barrier (MDPE or similar) between batten & cladding

Drained and vented cavity as per E2/AS1



Cavity batten note:

- 20mm single castellated timber battens required for all Nu-Wall installations.
- Batten to have 15° slope for moisture egress
- 18mm single castellated battens are available from Nu Wall for all vertical applications to wall junctions and jambs
- Proprietary Nu-Wall Alibat is available as an alternative when a structural non-combustable cavity batten is required



Nu-Wall cladding vertical on cavity
Vertical Join - Mixed cladding NC105X-NC103

NW-VOC-043b.02

Drawn by: Nu-Wall

Date:

© 2021 copyright in this document is the property of Nu-Wall Aluminium Cladding Limited. All rights reserved. Nu-Wall is a registered trademark of Aluminium Product Brands NZ Limited

Checked by: RL, GT

Scale: 1:2 @ A4