

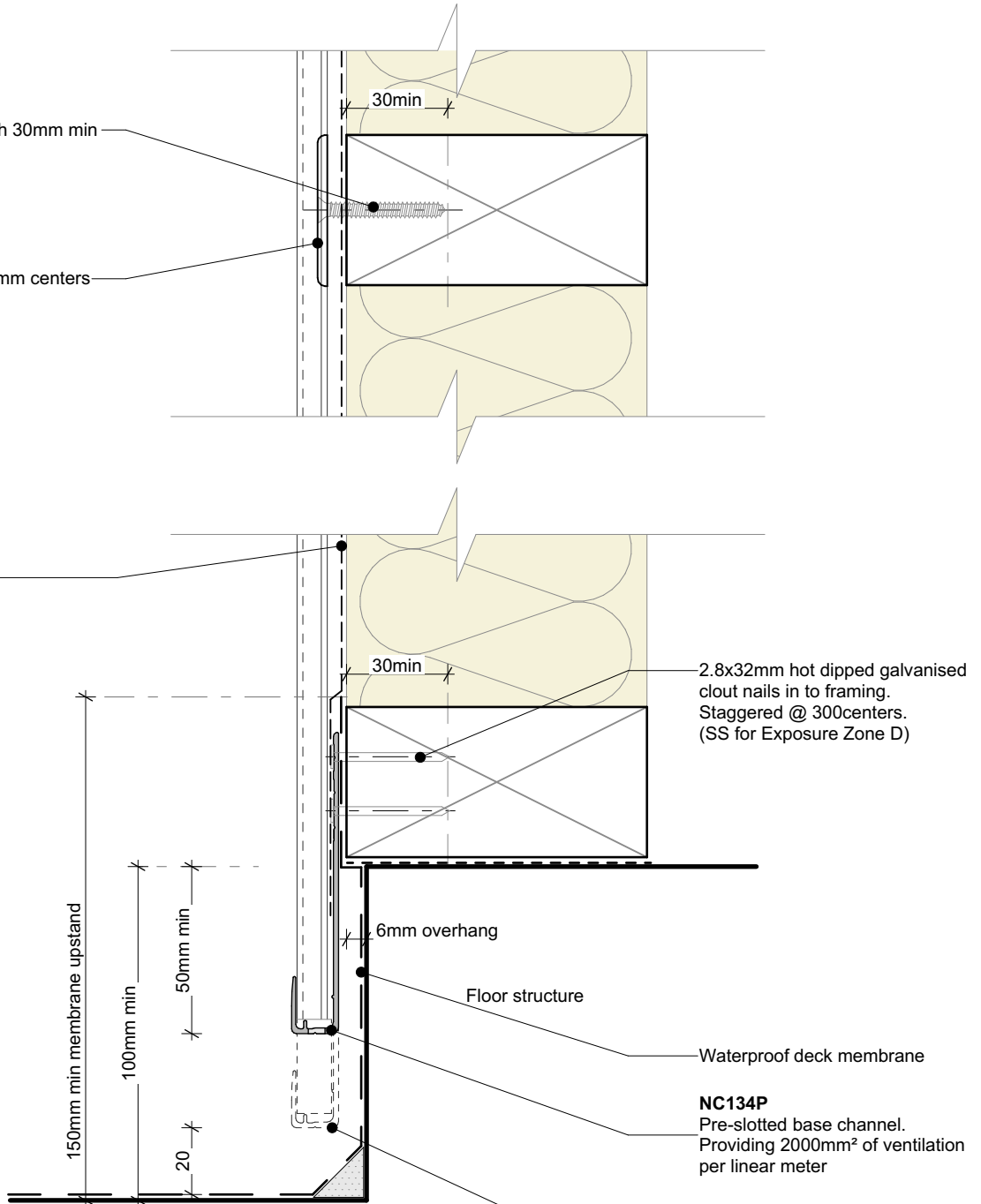
NC204

10g ss csk screws with 30mm min embedment

NC203E

Fixing bracket @ 600mm centers

Wall underlay



Waterproof deck structure.
Ensure that design and waterproofing complies with NZBC E2/AS1

2.8x32mm hot dipped galvanised clout nails in to framing. Staggered @ 300centers. (SS for Exposure Zone D)

NC134P
Pre-slotted base channel. Providing 2000mm² of ventilation per linear meter

NOTE
Nu-Wall supports the extension of the base channel down to 20mm of any hard surface. Timber cavity battens to comply with NZS 3604 requirements.

Note:

- Standard fixing specification. May vary depending on wind load



Nu-Wall cladding vertical direct fix
Typical base channel over waterproof deck

NW-VDF-004.01

| | |
|--------------------|-----------------|
| Drawn by: Nu-Wall | Date: 9/05/2022 |
| Checked by: RL, GT | Scale: 1:2 @ A4 |

© 2021 copyright in this document is the property of Nu-Wall Aluminium Cladding Limited. All rights reserved. Nu-Wall is a registered trademark of Aluminium Product Brands NZ Limited